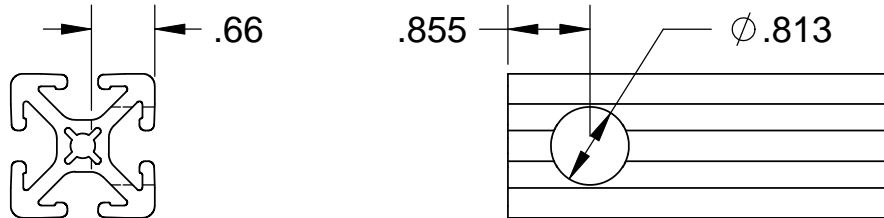


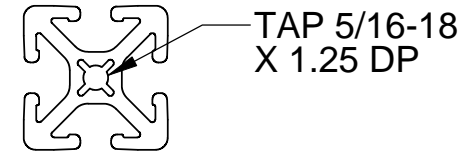
MACHINING OPERATIONS

CB-AF - COUNTERBORE FOR ANCHOR FASTENER



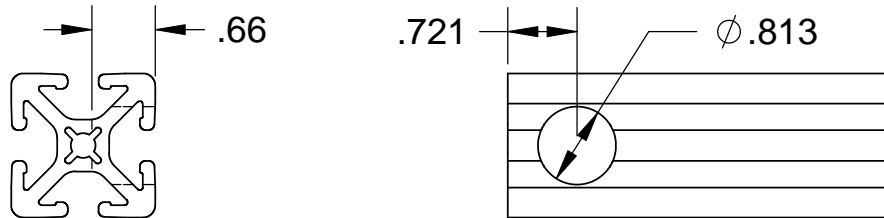
ORDERING EXAMPLE - SM-1515 X 35.50 LG W/CB-AF IN LEFT END AT AA AND RIGHT END AT CA

ET-31 - END TAP 5/16-18 UNC

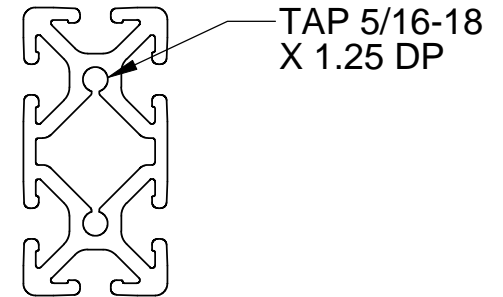


ORDERING EXAMPLE - SM-1515 X 35.50 LG W/ET-31 IN LEFT END

CB-BF - COUNTERBORE FOR BUTT FASTENER



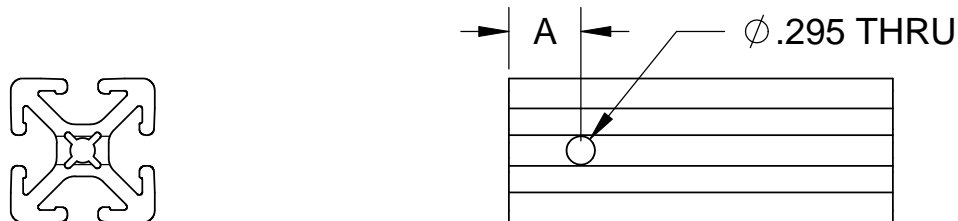
ORDERING EXAMPLE - SM-1515 X 35.50 LG W/CB-BF IN LEFT END AT AA



ORDERING EXAMPLE - SM-1530 X 35.50 LG W/ET-31 IN LEFT END AT POSITION BA AND BB AND RIGHT END AT POSITION BA

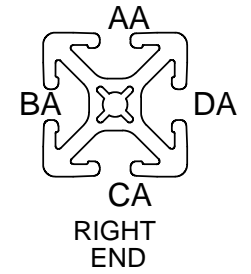
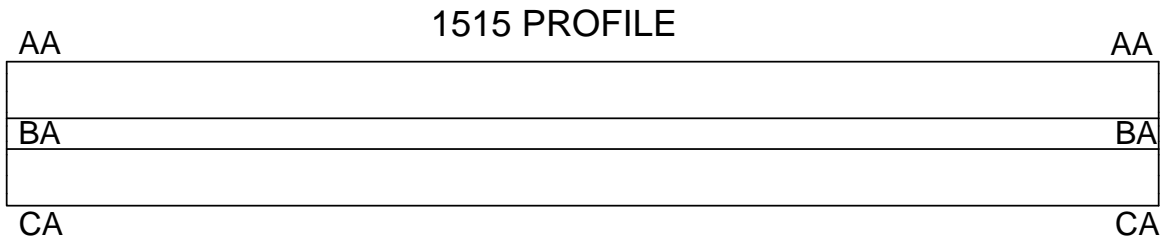
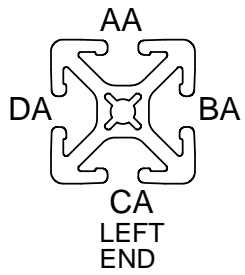
(THIS IS A TOTAL OF 3 TAPPING OPERATIONS)

DRL-EF - DRILL THRU FOR END FASTENER



ORDERING EXAMPLE - SM-1515 X 35.50 LG W/DRL-EF IN SLOT AA .75, 12.75 AND 34.75 FROM LEFT END

SLOT LOCATION DESIGNATION



LEFT
END

RIGHT
END

