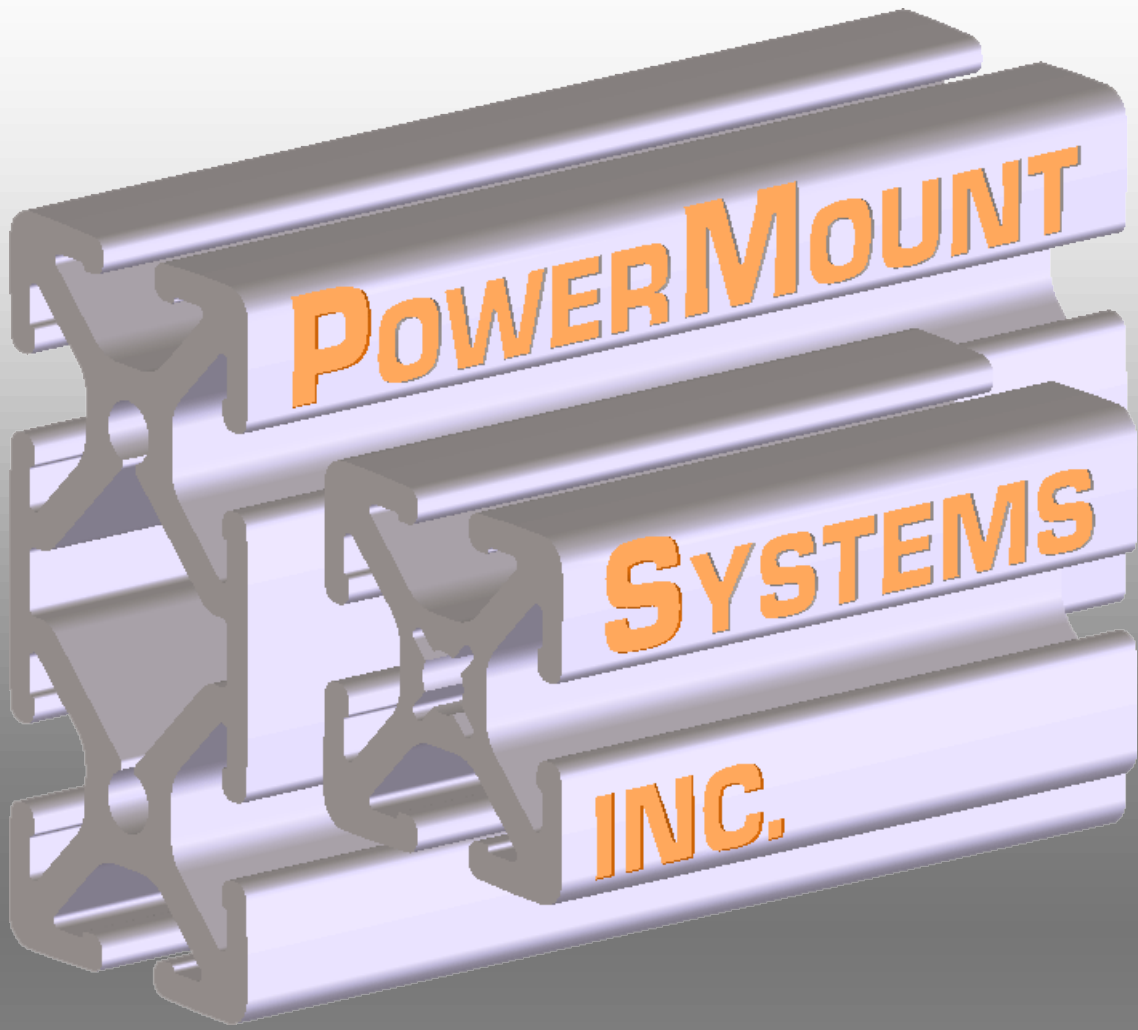


**POWERMOUNT SYSTEMS**



**SPRING 2013**

# **CATALOG**

**[WWW.POWERMOUNTSYSTEMS.COM](http://WWW.POWERMOUNTSYSTEMS.COM)**

**Phone: (740) 499-4330**



**1602 LaRue Marseilles Rd.  
La Rue, OH 43332-8928**



# About PowerMount Systems

Thank You For Choosing PowerMount Systems Inc. For Your T-Slot & Aluminum Extrusions

We offer both standard T-Slot Aluminum Extrusions and also custom aluminum extrusions for your needs. We also offer many different coating options to include anodizing, powder coat, and paint.

## What Sets Us Apart From The Rest:

All Products are Proudly made in America

Custom Machined Extrusions and Joining Plates

Custom Aluminum Extrusions\*

Custom Coating to include Anodizing, Powder Coat and Paint\*

Custom Color Coating\*

SolidWorks, .IGS, and .step 3D Model Files along with .DWG and .DXF 2D Model Files for most of the products we sell

## About Us

We at PowerMount Systems are committed to provide high quality products and services that are also economical. All products we sell are either made in our factory here in Ohio or come from other companies manufacturing within the United States. We are dedicated in promoting the American way of life with hopes of prosperity for all. We are a conservative company that believes in passing savings on to our customers.

## Why buy American?

There are many reasons why we should buy products that are made in the United States. One of the biggest reasons is that for each item that is made in the USA there is an American that made it. This could be a friend, neighbor, relative or a perfect stranger but we all share one common trait we live and consume products in the United States. It is true that everything purchased supports the American economy whether it was made here or in another country, however there is a double benefit of buying products made in the U.S.A. in that we are supporting the American worker not just the corporation that markets the product. All money earned through wages not only helps the individual or family grow but helps the American economy grow as well. If each American worker were to buy American made products we as a people would begin to re-establish our self reliance that has long been traded for low cost low quality products and higher corporate profits. In today's world of discount superstores and on-line internet sites it is becoming increasingly difficult to find products that bear the Made in the U.S.A. label. You may rest assured that all products sold on this web site are Made in America. Proud to be American Made and Veteran Owned

\*Minimum quantities required

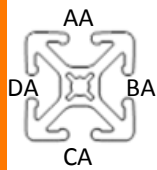
# Table of Contents

TSlot Aluminum Extrusions _____	6, 7
Aluminum Bars _____	8-10
Attachment Plates _____	11-29
Corner Brackets _____	30-34
Corner Supports (NEW) _____	35, 36
Anchor & Butt Fasteners _____	37, 38
Drop-in T-nuts _____	39, 40
Standard T-nuts _____	41
Economy T-nuts _____	41
Double & Triple T-nuts _____	42
End Fasteners _____	43
Flanged Button Head Caps _____	44
Handles & Caps _____	45, 46
Phenolic Rigid Casters _____	47, 51, 55, 59
Phenolic Swivel Casters _____	48, 52, 56, 60
Polyurethane Hi-tech Rigid Casters _____	49, 53, 57, 61
Polyurethane Hi-tech Swivel Casters _____	50, 54, 58, 62
Swivel Locks _____	63
Lock Brakes _____	64, 65

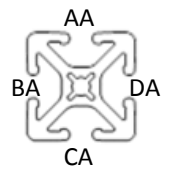
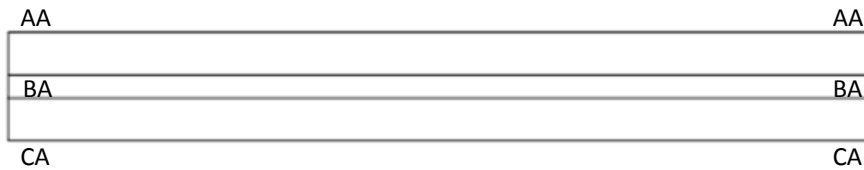
## Table of Contents

# Slot Location Designation

## 1515 Profile

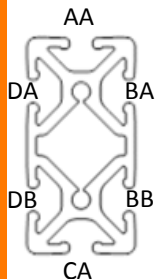


Left  
End

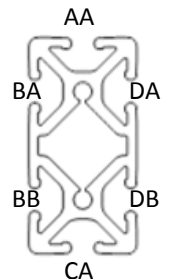
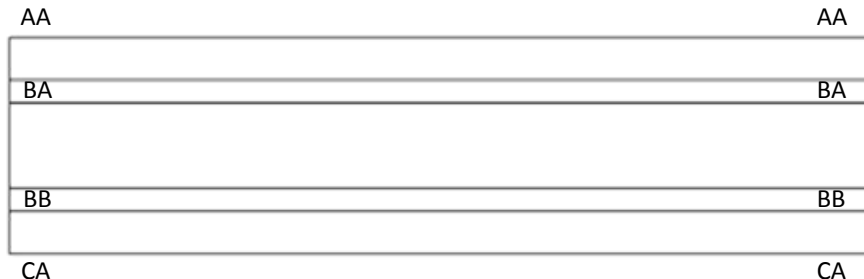


Right  
End

## 1530 Profile



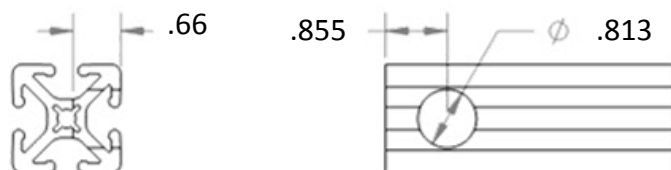
Left  
End



Right  
End

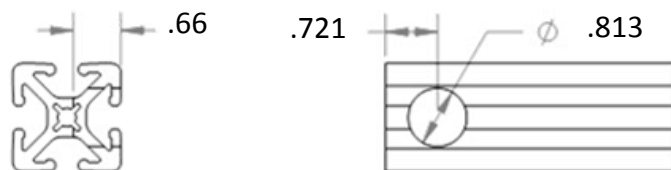
# Machining Operations

## CB-AF—Counterbore for Anchor Fasteners



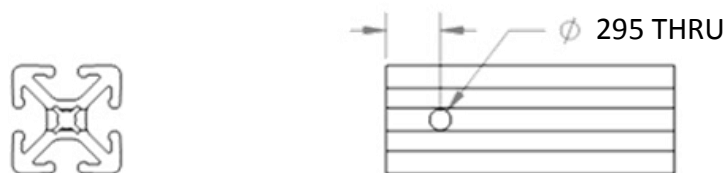
Ordering Example—SM1515 X 35.50 LG W/CB-AF in Left End at AA and Right End at CA

## CB-BF—Counterbore for Butt Fasteners



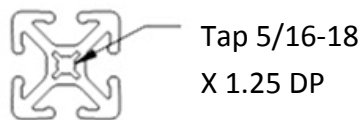
Ordering Example—SM1515 X 35.50 LG W/CB-BF in Left End at AA

## DRL-EF—Drill Thru for End Fastener

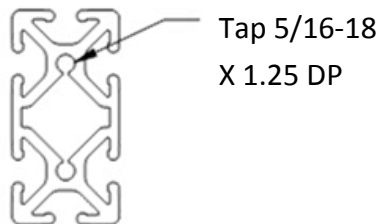


Ordering Example—SM1515 X 35.50 LG W/DRL-EF in Slot AA .75, 12.75 and 34.75 from Left End

## ET-31—End Tap 5/16-18 UNC



Ordering Example—SM1515 X 35.50 LG W/ ET-31 in Left End



Ordering Example—SM1515 X 35.50 LG W/ ET-31 in Left End at Position BA and BB at Right End at Position BA

(This is a Total of 3 Tapping Operations)

## 1-1/2 X 1-1/2 T-Slot Aluminum Extrusion

1-1/2 X 1-1/2 T-Slot Aluminum Extrusion

4 open slots

Smooth Sides

Clear Anodized

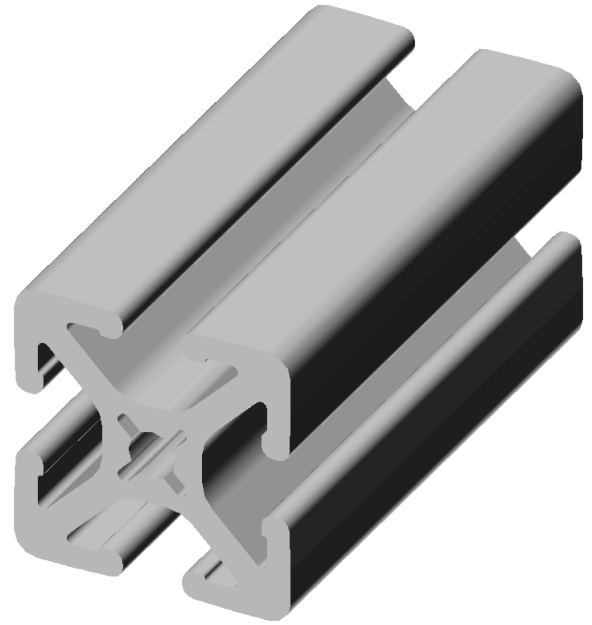
Comes in 8 Standard Shippable Sizes

Custom lengths up to 16' 2" cut to the nearest 1/16 inch\*

Custom machining available including counterbores, taps, and drilling

Custom coating and colors available\*\*

Call or email us and we will contact you as soon as we can for custom sizes, cuts, machining, and coating



Length	Item#
12 Inch	SM-1515-12
24 Inch	SM-1515-24
36 Inch	SM-1515-36
48 Inch	SM-1515-48
60 Inch	SM-1515-60
72 Inch	SM-1515-72
84 Inch	SM-1515-84
96 Inch	SM-1515-96

Order to the nearest 1/16 of an inch

**Example:** Order SM-1515-12.25 for a 12-1/4 length

\*Additional freight shipping will be calculated at time of sale for lengths longer than 8'

\*\*Minimum quantities required

Compare to:	
Company	Item #
80 / 20	1515-S
Faztek	15SM1515
TSlots	TS15-15
Frame-World	EX-1
AcuFrame	AP-1515
MainFrame	MFI-15X15
Parker IPS	11-1515
Alu-Flex	1515

# 1-1/2 X 3 T-Slot Aluminum Extrusion

1-1/2 X 3 T-Slot Aluminum Extrusion

6 open slots

Smooth Sides

Clear Anodized

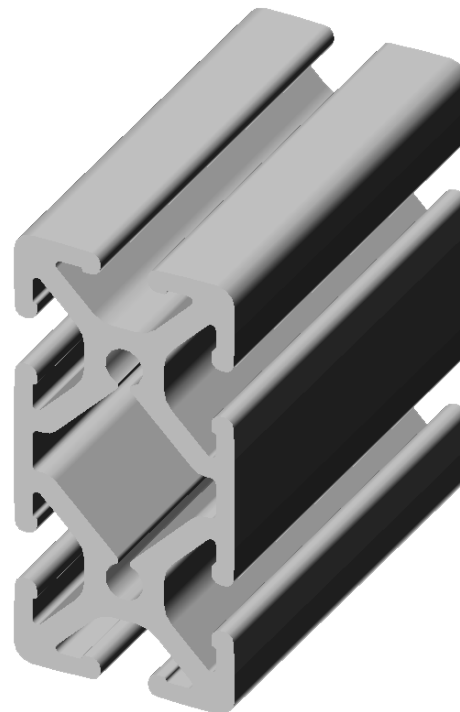
Comes in 4 Standard Shippable Sizes

Custom lengths up to 16' 2" cut to the nearest 1/16 inch\*

Custom machining available including counterbores, taps, and drilling

Custom coating and colors available\*\*

Call or email us and we will contact you as soon as we can for custom sizes, cuts, machining, and coating



**T-Slot Extrusion**

Length	Item#
12 Inch	SM-1530-12
24 Inch	SM-1530-24
36 Inch	SM-1530-36
48 Inch	SM-1530-48
60 Inch	SM-1530-60
72 Inch	SM-1530-72
84 Inch	SM-1530-84
96 Inch	SM-1530-96

Order to the nearest 1/16 of an inch

**Example:** Order SM-1530-12.25 for a 12-1/4 length

\*Additional freight shipping will be calculated at time of sale for lengths longer than 8'

\*\*Minimum quantities required

Compare to:	
Company	Item #
80 / 20	1530-S
Faztek	15SM1530
TSlots	TS15-30
Frame-World	EX-2
AcuFrame	AP-1530
MainFrame	MFI-15X30
Parker IPS	11-1530
Alu-Flex	1530

## 3" X 1/4" Aluminum Bar

### 3" X 1/4" Aluminum Bar

Comes in 8 Standard Shippable Sizes

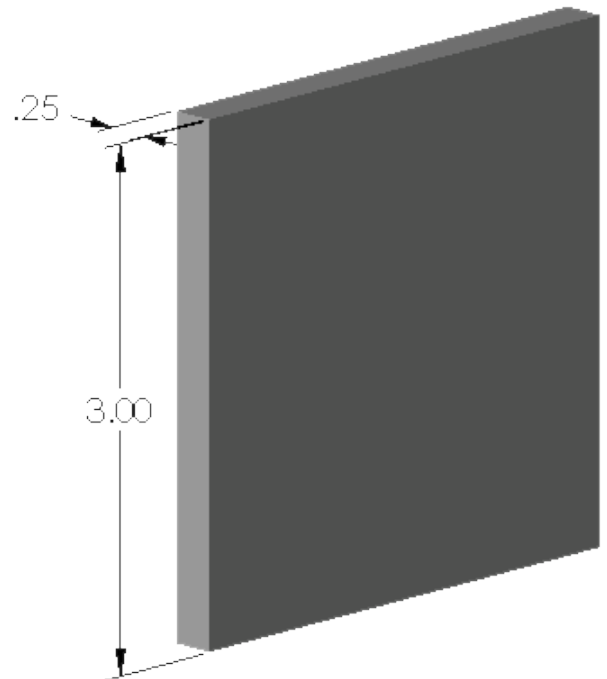
Custom lengths up to 8' cut to the nearest 1/16 inch

Custom machining available including counterbores, taps, and drilling

Custom coating and colors available\*

Call us during operating hours

or email anytime and we will contact you as soon as we can for custom sizes, cuts, machining, and coating



Length	Item#
12 Inch	30-BAR-12
24 Inch	30-BAR-24
36 Inch	30-BAR-36
48 Inch	30-BAR-48
60 Inch	30-BAR-60
72 Inch	30-BAR-72
84 Inch	30-BAR-84
96 Inch	30-BAR-96

Order to the nearest 1/16 of an inch

**Example:** Order 30-BAR-12.25 for a 12-1/4 length

\*Minimum quantities required

Compare to:	
Company	Item #
80 / 20	8341
Faztek	15SS8008
TSlots	662057



# 4-1/2" X 1/4" Aluminum Bar

## 4-1/2" X 1/4" Aluminum Bar

Comes in 8 Standard Shippable Sizes

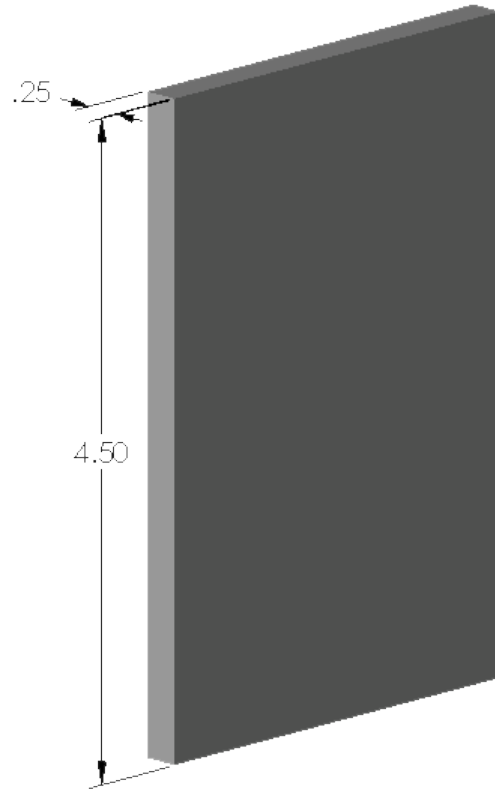
Custom lengths up to 8' cut to the nearest 1/16 inch

Custom machining available including counterbores, taps, and drilling

Custom coating and colors available\*

Call us during operating hours

or email anytime and we will contact you as soon as we can for custom sizes, cuts, machining, and coating



Length	Item#
12 Inch	45-BAR-12
24 Inch	45-BAR-24
36 Inch	45-BAR-36
48 Inch	45-BAR-48
60 Inch	45-BAR-60
72 Inch	45-BAR-72
84 Inch	45-BAR-84
96 Inch	45-BAR-96

### Compare to:

Company	Item #
80 / 20	8376
Faztek	15SS8009
TSlots	662112

Order to the nearest 1/16 of an inch

**Example:** Order 45-BAR-12.25 for a 12-1/4 length

\*Minimum quantities required

Aluminum Bar

## 6" X 1/4" Aluminum Bar

### 6" X 1/4" Aluminum Bar

Comes in 8 Standard Shippable Sizes

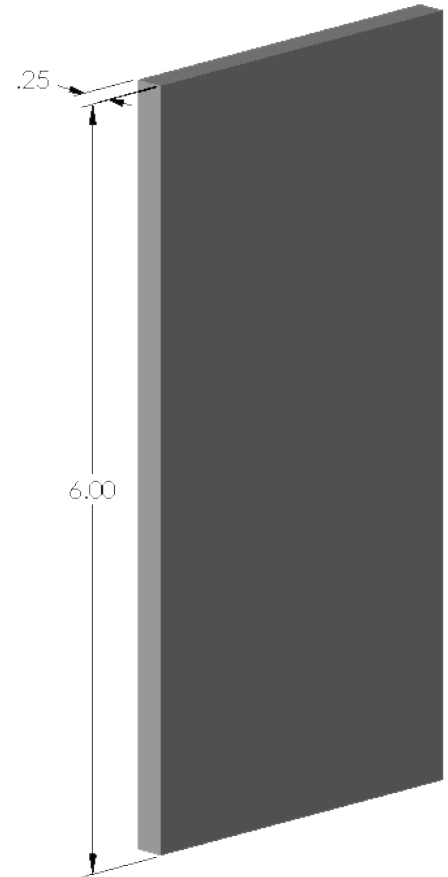
Custom lengths up to 8' cut to the nearest 1/16 inch

Custom machining available including counterbores, taps, and drilling

Custom coating and colors available\*

Call us during operating hours

or email anytime and we will contact you as soon as we can for custom sizes, cuts, machining, and coating



Length	Item#
12 Inch	60-BAR-12
24 Inch	60-BAR-24
36 Inch	60-BAR-36
48 Inch	60-BAR-48
60 Inch	60-BAR-60
72 Inch	60-BAR-72
84 Inch	60-BAR-84
96 Inch	60-BAR-96

Order to the nearest 1/16 of an inch

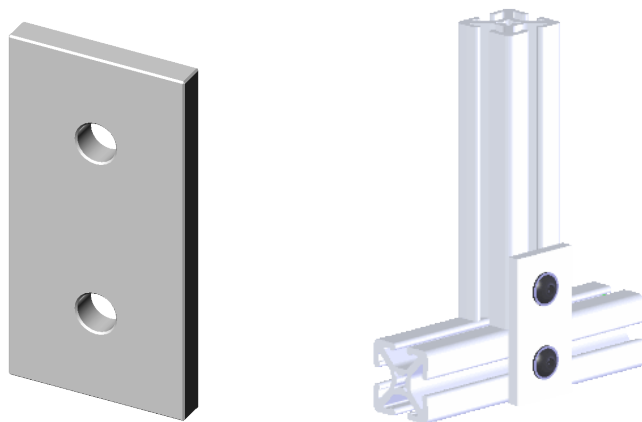
**Example:** Order 60-BAR-12.25 for a 12-1/4 length

\*Minimum quantities required

Compare to:	
Company	Item #
80 / 20	8386
Faztek	15SS8010
TSlots	662071

# 1-1/2 X 3 Two Hole Attachment Plate

Aluminum Attachment Plate  
1-1/2 X 3 X 1/4  
Two 21/64 Diameter Holes  
Fits 15 Series T-Slot Extrusions



Item #

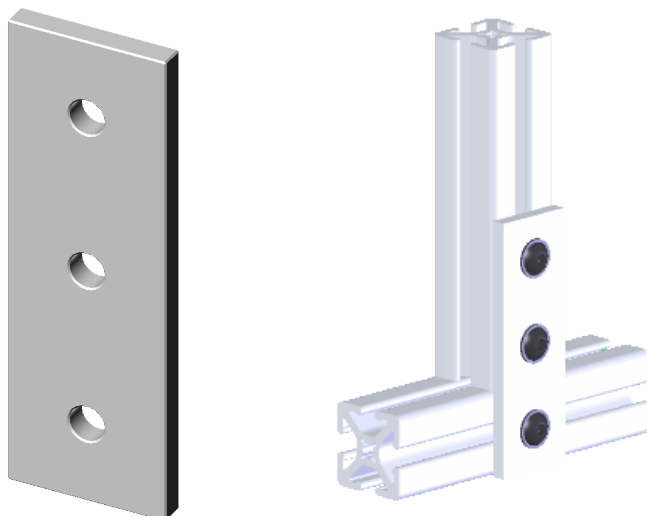
15AP4-1530

Compare to:

Company	Item #
80 / 20	4307
Faztek	15JP4501
TSlots	653141
Frame-World	EB-33
AcuFrame	ACP-152
MainFrame	MFI-303
Parker IPS	20-300
Alu-Flex	JP 153-2

# 1-1/2 X 4-1/2 Three Hole Attachment Plate

Aluminum Attachment Plate  
1-1/2 X 4-1/2 X 1/4  
Three 21/64 Diameter Holes  
Fits 15 Series T-Slot Extrusions



Item #

15AP4-1545

Compare to:

Company	Item #
80 / 20	4306
Faztek	15JP4502
TSlots	653140
Frame-World	EB-31
AcuFrame	ACP-153
MainFrame	MFI-305
Alu-Flex	JP 153-3

Attachment Plates

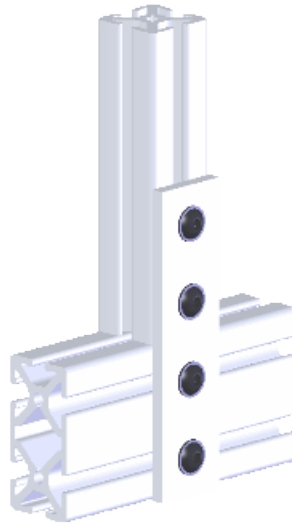
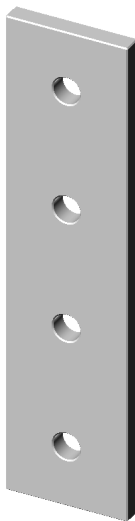
## 1-1/2 X 6 Four Hole Attachment Plate

Aluminum Attachment Plate

1-1/2 X 6 X 1/4

Four 21/64 Diameter Holes

Fits 15 Series T-Slot Extrusions



Item #

15AP4-1560

Compare to:

Company	Item #
80 / 20	4305
Faztek	15JP4503
TSlots	653139
Frame-World	EB-28
AcuFrame	ACP-154
MainFrame	MFI-307
Parker IPS	20-301
Alu-Flex	JP 156-4

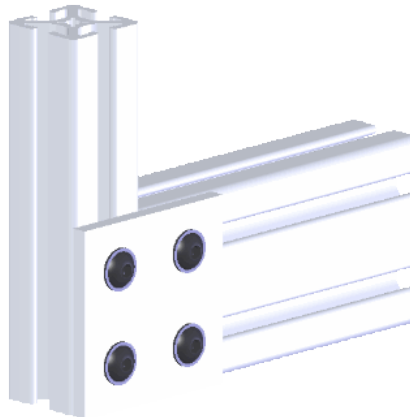
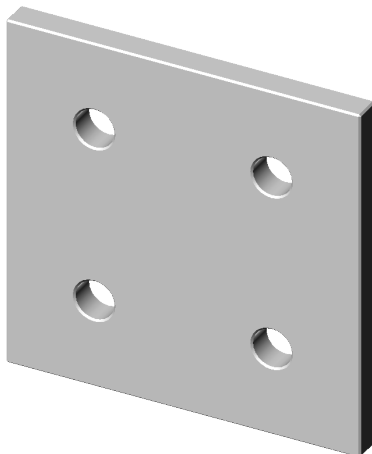
## 3 X 3 Four Hole Attachment Plate

Aluminum Attachment Plate

3 X 3 X 1/4

Four 21/64 Diameter Holes

Fits 15 Series T-Slot Extrusions



Item #

15AP4-3030

Compare to:

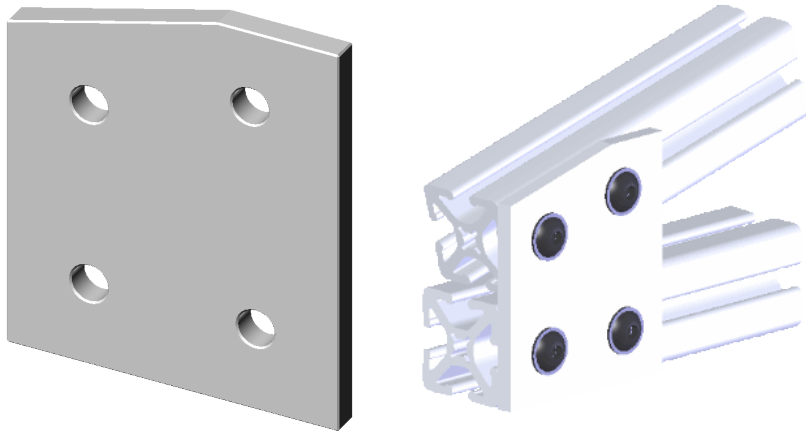
Company	Item #
80 / 20	4367
Faztek	15JP4504
TSlots	653199
Frame-World	EB-29
AcuFrame	ACP-304
MainFrame	MFI-309
Parker IPS	20-302
Alu-Flex	JP 33-4

## 3 X 3-1/2 15 Degree Four Hole Attachment Plate

Aluminum Attachment Plate  
3 X 3-1/2 X 1/4  
Four 21/64 Diameter Holes  
For 15 Degree Mounting  
Fits 15 Series T-Slot Extrusions

Item #
15AP4-3035-15

Compare to:	
Company	Item #
80 / 20	4316
Faztek	15JP4518
TSlots	653149
MainFrame	MFI-420

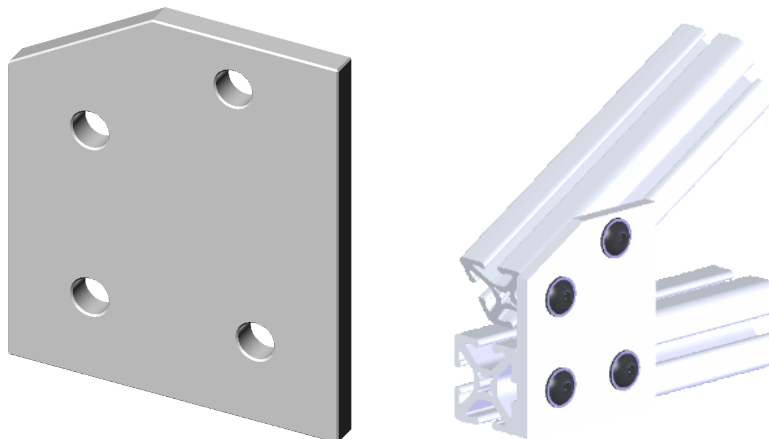


## 3 X 3-1/2 30 Degree Four Hole Attachment Plate

Aluminum Attachment Plate  
3 X 3-1/2 X 1/4  
Four 21/64 Diameter Holes  
For 30 Degree Mounting  
Fits 15 Series T-Slot Extrusions

Item #
15AP4-3035-30

Compare to:	
Company	Item #
80 / 20	4331
Faztek	15JP4525
TSlots	653164
Frame-World	EB-128
MainFrame	MFI-422
Alu-Flex	AJP 1530-4



## 3 X 4-1/2 45 Degree Four Hole Attachment Plate

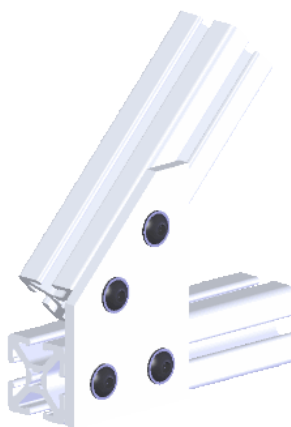
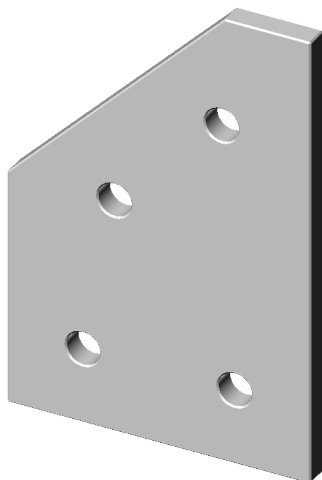
Aluminum Attachment Plate  
3 X 4-1/2 X 1/4  
Four 21/64 Diameter Holes  
For 45 Degree Mounting  
Fits 15 Series T-Slot Extrusions

Item #

15AP4-3045-45

Compare to:

Company	Item #
80 / 20	4346
Faztek	15JP4529
TSlots	653178
Frame-World	EB-127
MainFrame	MFI-424
Alu-Flex	AJP 345-4



## 3 X 4-1/2 60 Degree Four Hole Attachment Plate

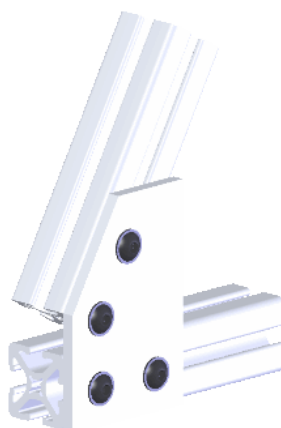
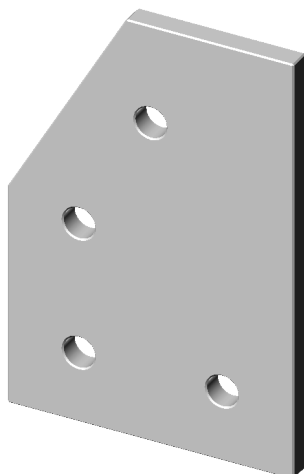
Aluminum Attachment Plate  
3 X 4-1/2 X 1/4  
Four 21/64 Diameter Holes  
For 60 Degree Mounting  
Fits 15 Series T-Slot Extrusions

Item #

15AP4-3045-60

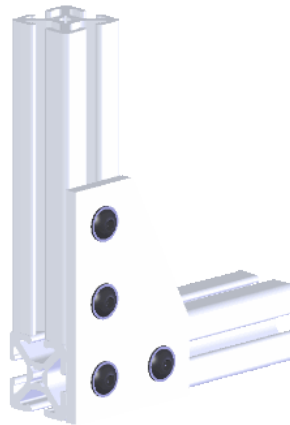
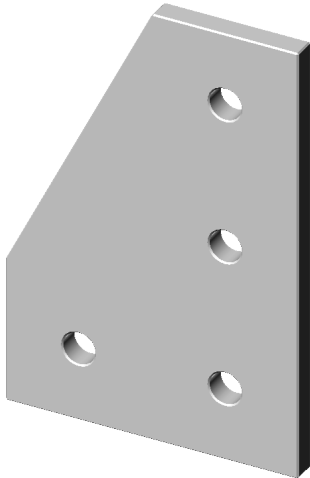
Compare to:

Company	Item #
80 / 20	4361
Faztek	15JP4532
TSlots	653193
Frame-World	EB-129
MainFrame	MFI-427
Alu-Flex	JP 1560-4



## 3 X 4-1/2 Four Hole Attachment Plate One Cut

Aluminum Attachment Plate  
3 X 4-1/2 X 1/4  
Four 21/64 Diameter Holes  
One Cut Corner  
Fits 15 Series T-Slot Extrusions



Item #

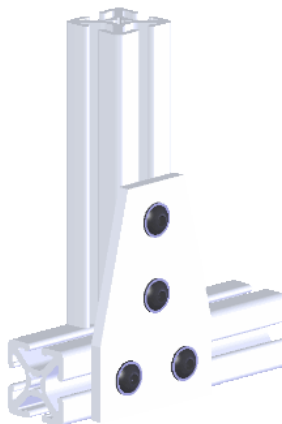
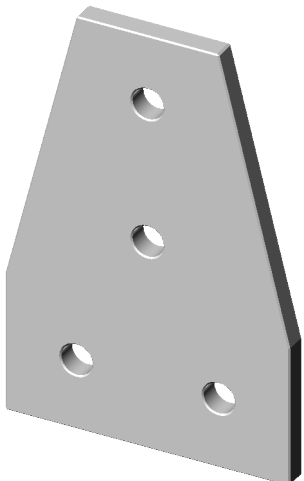
15AP4-3045-C

Compare to:

Company	Item #
80 / 20	4350
Faztek	15JP4505
TSlots	653182
Frame-World	EB-79
AcuFrame	ACP-304A
MainFrame	MFI-405

## 3 X 4-1/2 Four Hole Attachment Plate Two Cuts

Aluminum Attachment Plate  
3 X 4-1/2 X 1/4  
Four 21/64 Diameter Holes  
Two Cut Corners  
Fits 15 Series T-Slot Extrusions



Item #

15AP4-3045-C2

Compare to:

Company	Item #
80 / 20	4341
Faztek	15JP4527
TSlots	653174
Frame-World	EB-73
AcuFrame	ACP-304T
MainFrame	MFI-411
Alu-Flex	TJP 15-4

Attachment Plates

## 3 X 4.78 75 Degree Four Hole Attachment Plate

Aluminum Attachment Plate

3 X 4.78 X 1/4

Four 21/64 Diameter Holes

For 75 Degree Mounting

Fits 15 Series T-Slot Extrusions

Item #

15AP4-3048-75

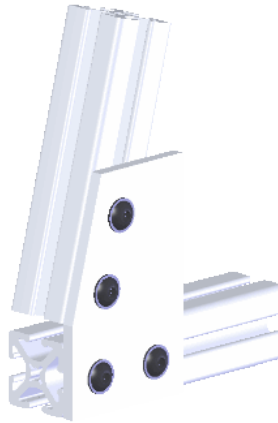
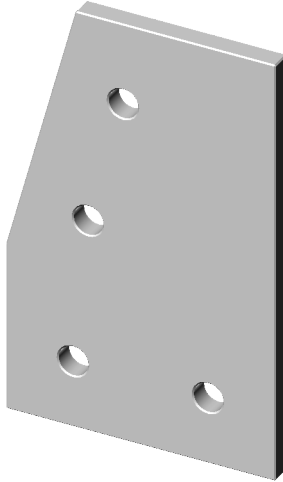
Compare to:

Company

Item #

Faztek

15JP4500



## 4-1/2 X 4-1/2 Five Hole Attachment Plate One Cut

Aluminum Attachment Plate

4-1/2 X 4-1/2 X 1/4

Five 21/64 Diameter Holes

One Cut Corner

Fits 15 Series T-Slot Extrusions

Item #

15AP5-4545-C

Compare to:

Company

Item #

80 / 20

4351

Faztek

15JP4507

TSlots

653183

Frame-World

EB-22

AcuFrame

ACP-455

MainFrame

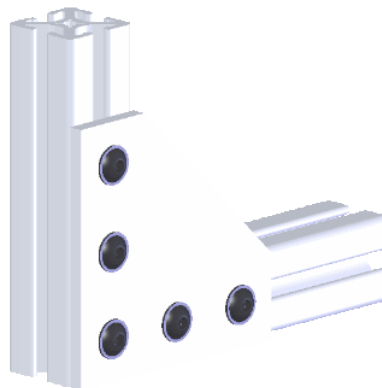
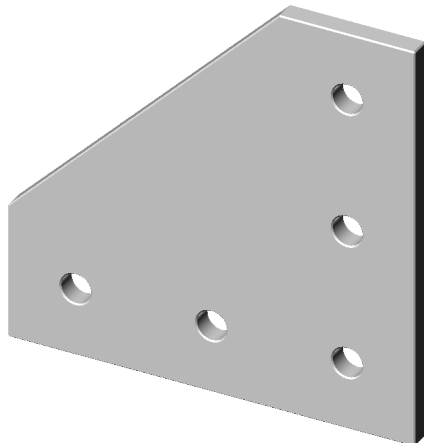
MFI-402

Parker IPS

20-304

Alu-Flex

CJP 15-5



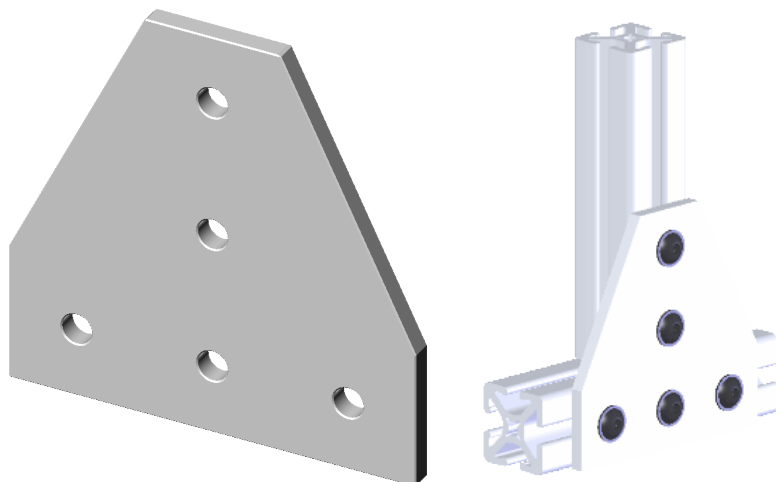


## 4-1/2 X 4-1/2 Five Hole Attachment Plate Two Cuts

Aluminum Attachment Plate  
4-1/2 X 4-1/2 X 1/4  
Five 21/64 Diameter Holes  
Two Cut Corners  
Fits 15 Series T-Slot Extrusions

Item #
15AP5-4545-C2

Compare to:	
Company	Item #
80 / 20	4340
Faztek	15JP4500
TSlots	653173
Frame-World	EB-23
AcuFrame	ACP-455T
MainFrame	MFI-412
Parker PS	20-305
Alu-Flex	TJP 15-5

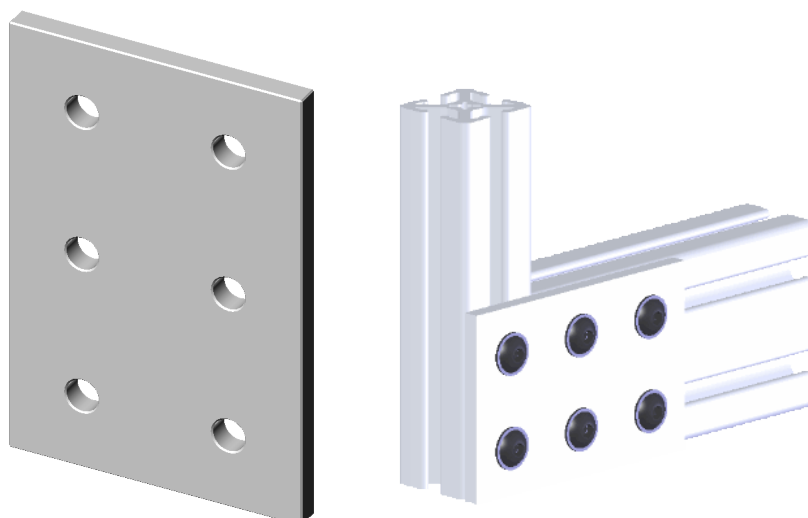


## 3 X 4-1/2 Six Hole Attachment Plate

Aluminum Attachment Plate  
3 X 4-1/2 X 1/4  
Six 21/64 Diameter Holes  
Fits 15 Series T-Slot Extrusions

Item #
15AP6-3045

Compare to:	
Company	Item #
80 / 20	4366
Faztek	15JP4534
TSlots	653198
Frame-World	EB-32
AcuFrame	ACP-306
MainFrame	MFI-310
Alu-Flex	JP 345-6



## 3 X 5 15 Degree Six Hole Attachment Plate

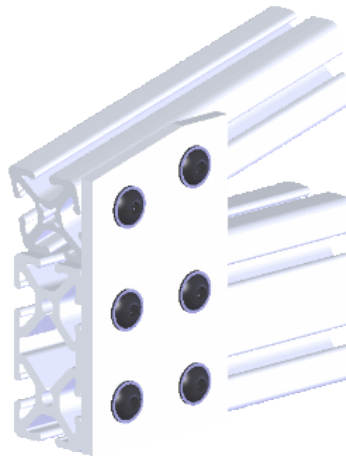
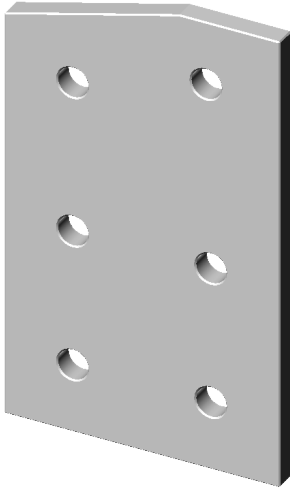
Aluminum Attachment Plate  
3 X 5 X 1/4  
Six 21/64 Diameter Holes  
For 15 Degree Mounting  
Fits 15 Series T-Slot Extrusions

Item #

15AP6-3050-15

Compare to:

Company	Item #
80 / 20	4315
Faztek	15JP4517
TSlots	653148
MainFrame	MFI-421



## 3 X 5 30 Degree Six Hole Attachment Plate

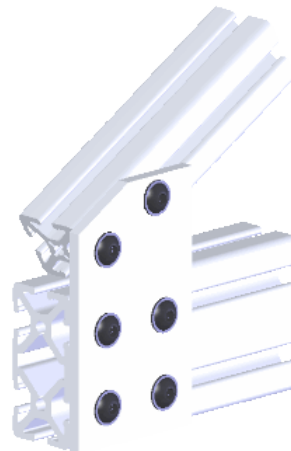
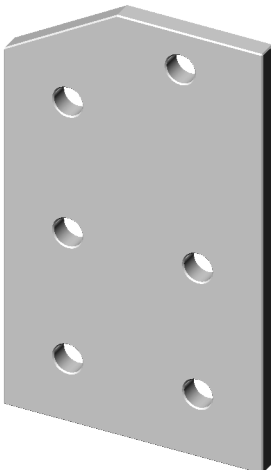
Aluminum Attachment Plate  
3 X 5 X 1/4  
Six 21/64 Diameter Holes  
For 30 Degree Mounting  
Fits 15 Series T-Slot Extrusions

Item #

15AP6-3050-30

Compare to:

Company	Item #
80 / 20	4330
Faztek	15JP4524
TSlots	653163
MainFrame	MFI-423



## 3 X 6 45 Degree Six Hole Attachment Plate

Aluminum Attachment Plate

3 X 6 X 1/4

Six 21/64 Diameter Holes

For 45 Degree Mounting

Fits 15 Series T-Slot Extrusions

Item #

15AP6-3060-45

Compare to:

Company

Item #

80 / 20

4345

Faztek

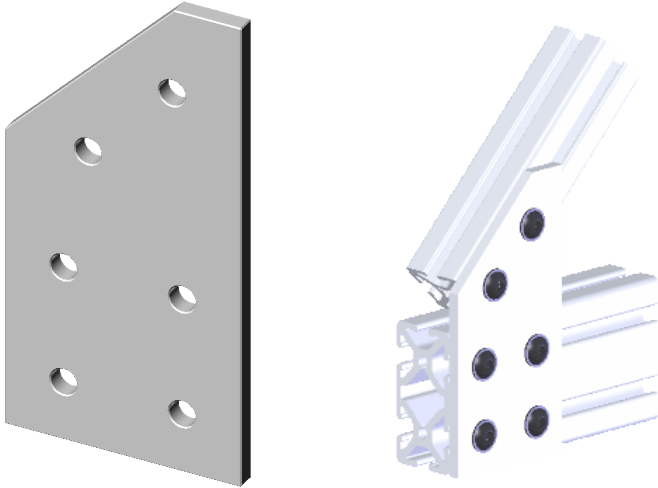
15JP4528

TSlots

653177

MainFrame

MFI-425



## 3 X 6 60 Degree Six Hole Attachment Plate

Aluminum Attachment Plate

3 X 6 X 1/4

Six 21/64 Diameter Holes

For 60 Degree Mounting

Fits 15 Series T-Slot Extrusions

Item #

15AP6-3060-60

Compare to:

Company

Item #

80 / 20

4362

Faztek

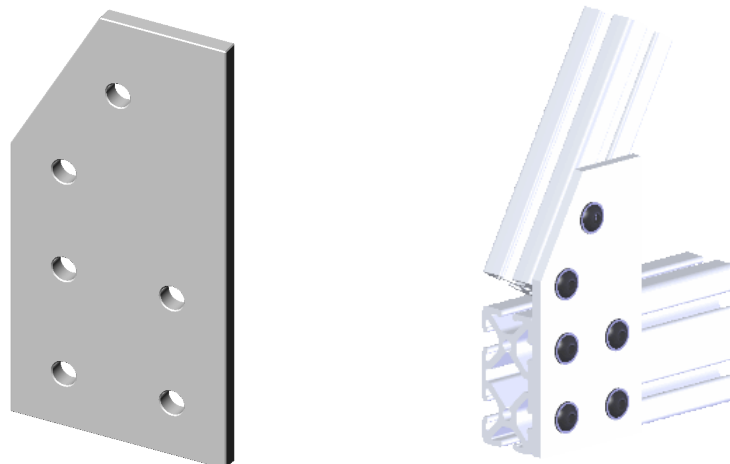
15JP4533

TSlots

653194

MainFrame

MFI-426



Attachment Plates

## 3 X 6 Six Hole Attachment Plate One Cut

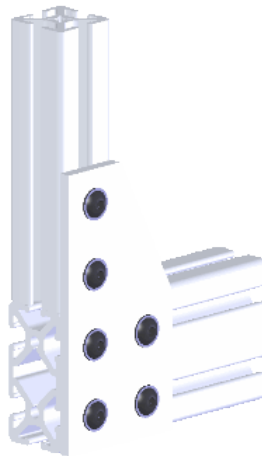
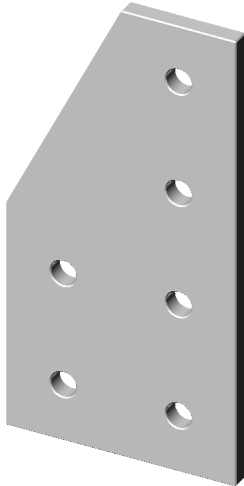
Aluminum Attachment Plate

3 X 6 X 1/4

Six 21/64 Diameter Holes

One Cut Corner

Fits 15 Series T-Slot Extrusions



Item #

15AP6-3060-C

Compare to:

Company	Item #
80 / 20	4320
Faztek	15JP4519
TSlots	653153
AcuFrame	ACP-607
MainFrame	MFI-406
Alu-Flex	CJP 156-6

## 3 X 6.28 75 Degree Six Hole Attachment Plate

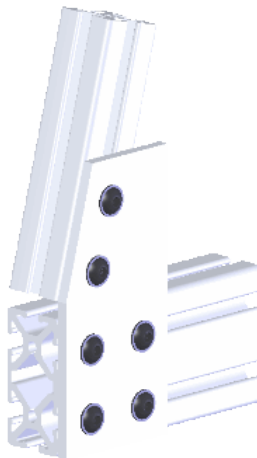
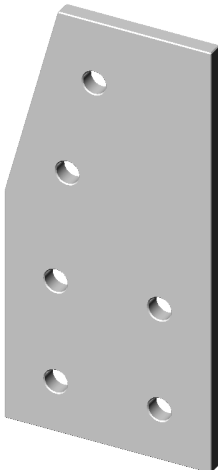
Aluminum Attachment Plate

3 X 6.28 X 1/4

Six 21/64 Diameter Holes

For 75 Degree Mounting

Fits 15 Series T-Slot Extrusions



Item #

15AP6-3063-75

Compare to:

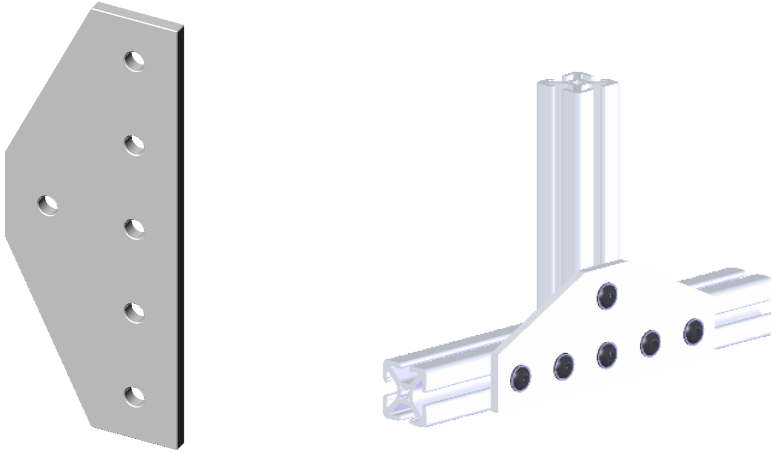
Company	Item #
Faztek	15JP4538

## 3 X 7-1/2 Six Hole Attachment Plate Two Cuts

Aluminum Attachment Plate  
3 X 7-1/2 X 1/4  
Six 21/64 Diameter Holes  
Two Cut Corners  
Fits 15 Series T-Slot Extrusions

Item #
15AP6-3075-C2

Compare to:	
Company	Item #
80 / 20	4310
Faztek	15JP4512
TSlots	653144
MainFrame	MFI-414

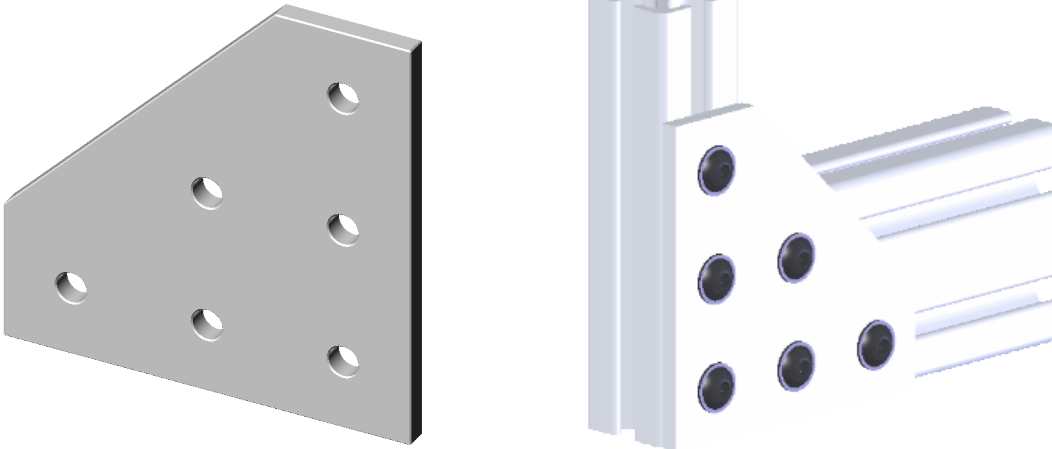


## 4-1/2 X 4-1/2 Six Hole Attachment Plate One Cut

Aluminum Attachment Plate  
4-1/2 X 4-1/2 X 1/4  
Six 21/64 Diameter Holes  
One Cut Corner  
Fits 15 Series T-Slot Extrusions

Item #
15AP6-4545-C

Compare to:	
Company	Item #
80 / 20	4461



## 4-1/2 X 4-1/2 Seven Hole Attachment Plate One Cut

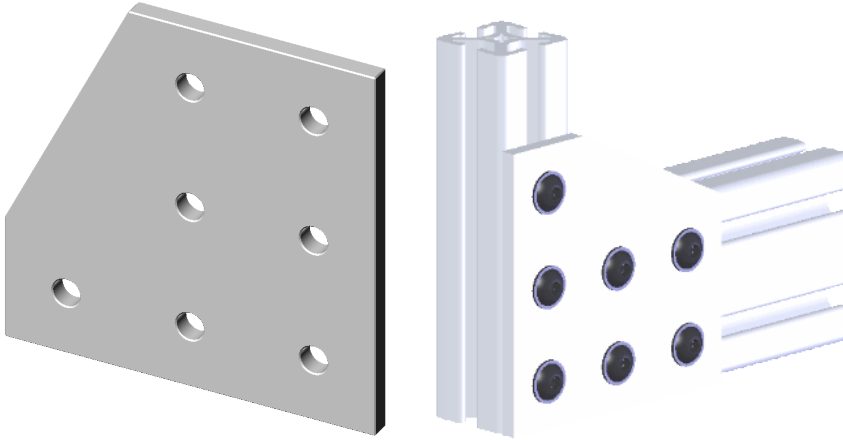
Aluminum Attachment Plate  
4-1/2 X 4-1/2 X 1/4  
Seven 21/64 Diameter Holes  
One Cut Corner  
Fits 15 Series T-Slot Extrusions

Item #

15AP7-4545-C

Compare to:

Company	Item #
80 / 20	4329
Faztek	15JP4523
TSlots	653162
Frame-World	EB-34
MainFrame	MFI-414



## 4-1/2 X 7-1/2 Seven Hole Attachment Plate Four Cuts

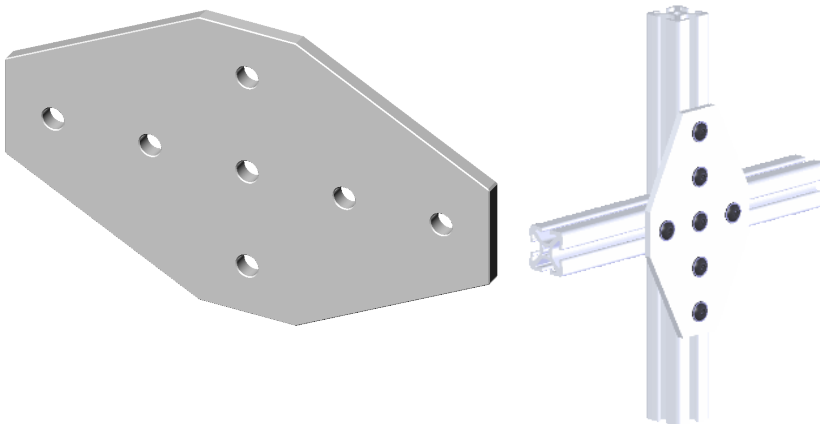
Aluminum Attachment Plate  
4-1/2 X 7-1/2 X 1/4  
Seven 21/64 Diameter Holes  
Four Cut Corners  
Fits 15 Series T-Slot Extrusions

Item #

15AP6-4575-C4

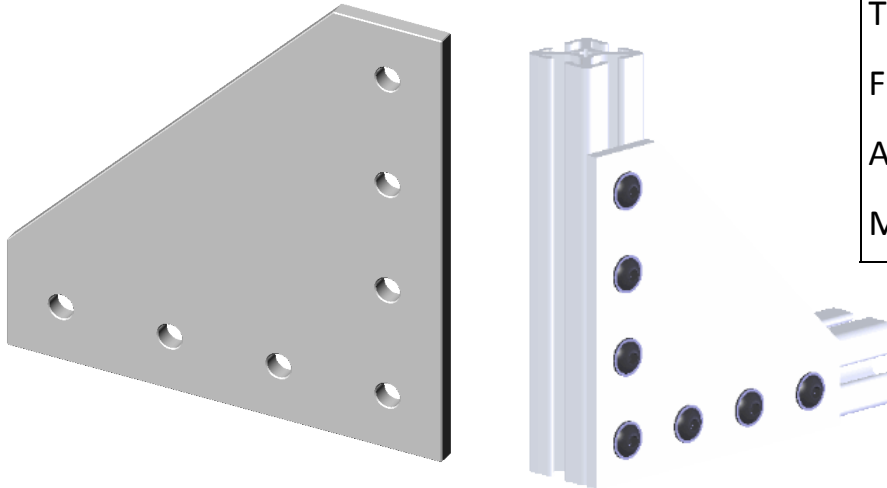
Compare to:

Company	Item #
80 / 20	4335
Faztek	15JP4526
TSlots	653168
Frame-World	EB-76
MainFrame	MFI-417
Alu-Flex	XJP 15-7



## 6 X 6 Seven Hole Attachment Plate One Cut

Aluminum Attachment Plate  
6 X 6 X 1/4  
Seven 21/64 Diameter Holes  
One Cut Corner  
Fits 15 Series T-Slot Extrusions



Item #

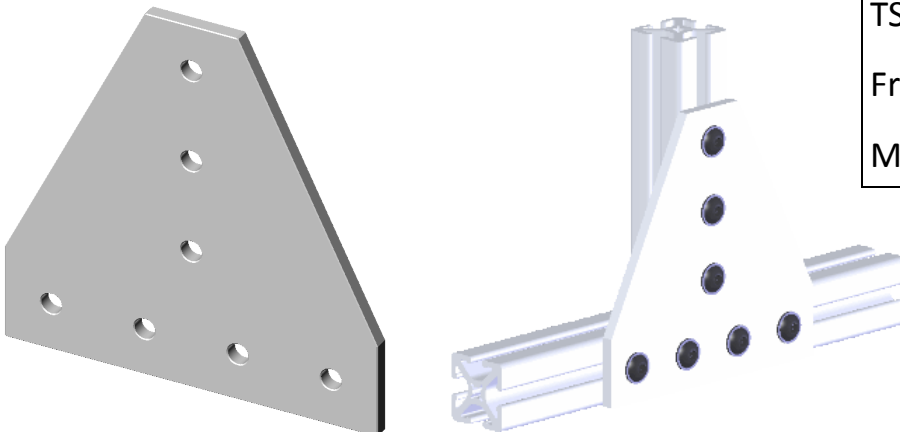
15AP7-6060-C

Compare to:

Company	Item #
80 / 20	4352
Faztek	15JP4508
TSlots	653184
Frame-World	EB-71
AcuFrame	ACP-607T
MainFrame	MFI-403

## 6 X 6 Seven Hole Attachment Plate Two Cuts

Aluminum Attachment Plate  
6 X 6 X 1/4  
Seven 21/64 Diameter Holes  
Two Cut Corners  
Fits 15 Series T-Slot Extrusions



Item #

15AP7-6060-C2

Compare to:

Company	Item #
80 / 20	4312
Faztek	15JP4516
TSlots	653146
Frame-World	EB-74
MainFrame	MFI-415

Attachment Plates

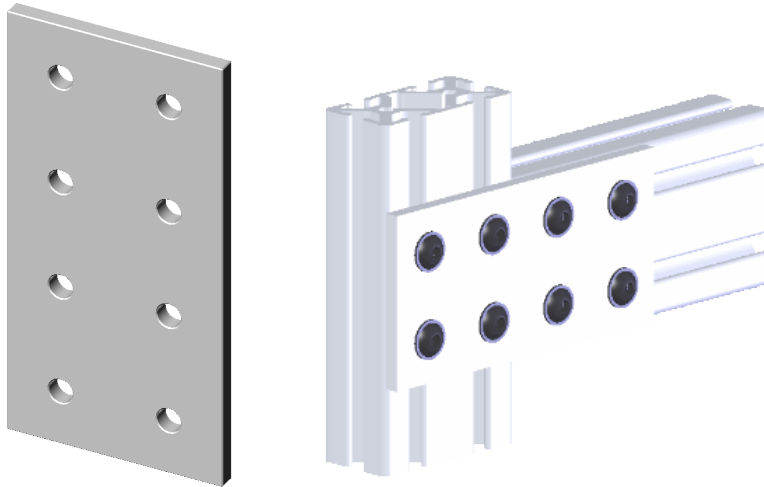
## 3 X 6 Eight Hole Attachment Plate

Aluminum Attachment Plate

3 X 6 X 1/4

Eight 21/64 Diameter Holes

Fits 15 Series T-Slot Extrusions



Item #

15AP8-3060

Compare to:

Company	Item #
80 / 20	4365
Faztek	15JP4509
TSlots	653197
Frame-World	EB-26
AcuFrame	ACP-308
MainFrame	MFI-414
Parker IPS	20-303
Alu-Flex	JP 36-8

## 4-1/2 X 6 Eight Hole Attachment Plate Two Cuts

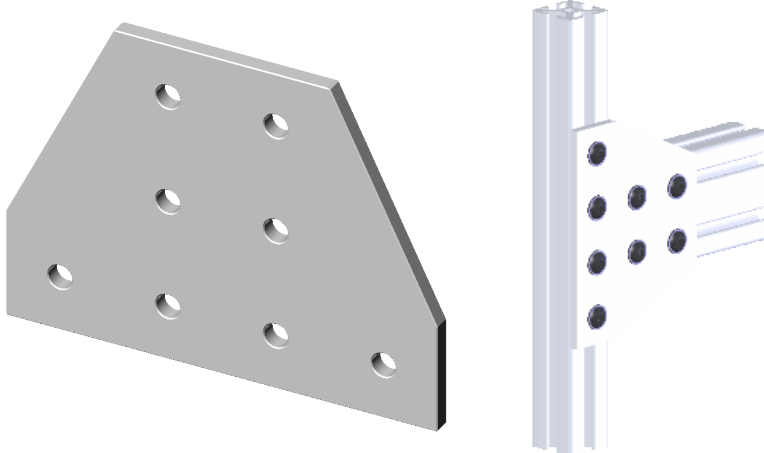
Aluminum Attachment Plate

4-1/2 X 6 X 1/4

Eight 21/64 Diameter Holes

Two Cut Corners

Fits 15 Series T-Slot Extrusions



Item #

15AP8-4560-C2

Compare to:

Company	Item #
80 / 20	4355
Faztek	15JP4530
TSlots	653187
Frame-World	EB-87
AcuFrame	ACP-608T
MainFrame	MFI-430
Alu-Flex	TJP 345-8



## 4-1/2 X 6 Nine Hole Attachment Plate One Cut

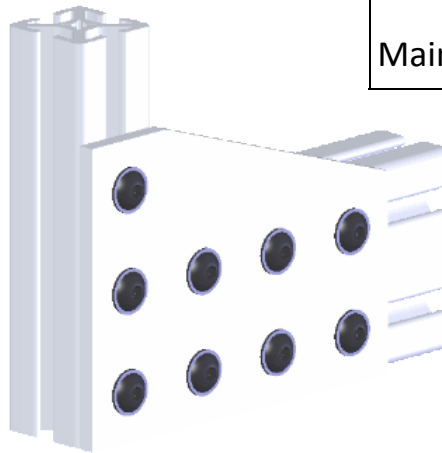
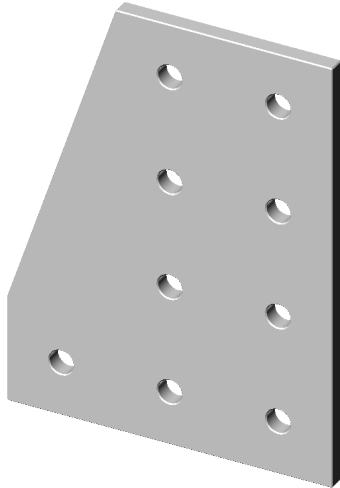
Aluminum Attachment Plate  
4-1/2 X 6 X 1/4  
Nine 21/64 Diameter Holes  
One Cut Corner  
Fits 15 Series T-Slot Extrusions

Item #

15AP9-4560-C

Compare to:

Company	Item #
80 / 20	4326
Faztek	15JP4521
TSlots	653159
MainFrame	MFI-408



## 6 X 6 Ten Hole Attachment Plate One Cut

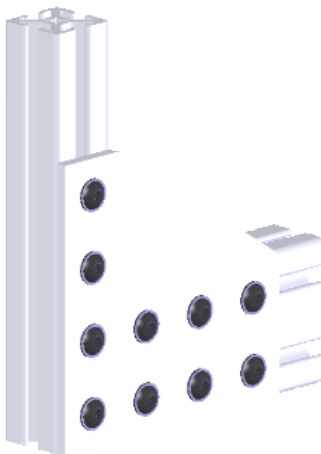
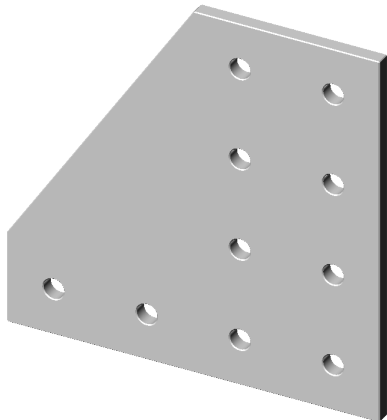
Aluminum Attachment Plate  
6 X 6 X 1/4  
Ten 21/64 Diameter Holes  
One Cut Corner  
Fits 15 Series T-Slot Extrusions

Item #

15AP10-6060-C

Compare to:

Company	Item #
80 / 20	4327
Faztek	15JP4522
TSlots	653160
AcuFrame	ACP-610
MainFrame	MFI-409



Attachment Plates

## 4-1/2 X 6 Eight Hole Attachment Plate Two Cuts

Aluminum Attachment Plate  
4-1/2 X 6 X 1/4  
Eight 21/64 Diameter Holes  
Two Cut Corners  
Fits 15 Series T-Slot Extrusions

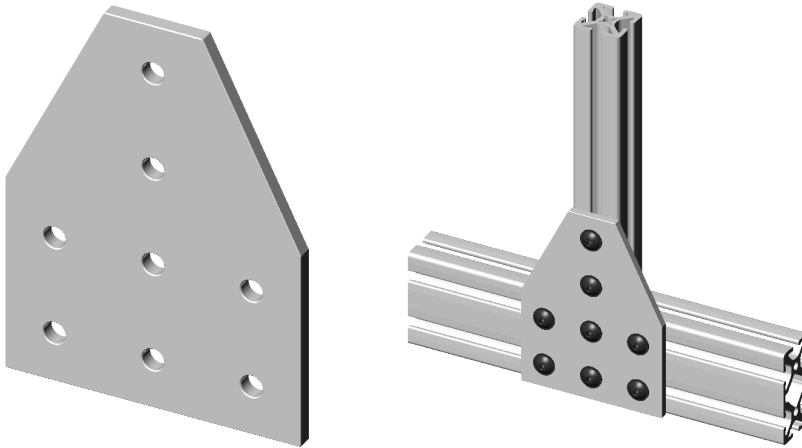
### Item #

15AP8-6045-C2

### Compare to:

Company	Item #
80 / 20	N/A
Faztek	N/A
TSlots	N/A

**\* PowerMount Original Part!**



## 4-1/2 X 7-1/2 Eleven Hole Attachment Plate Two Cuts

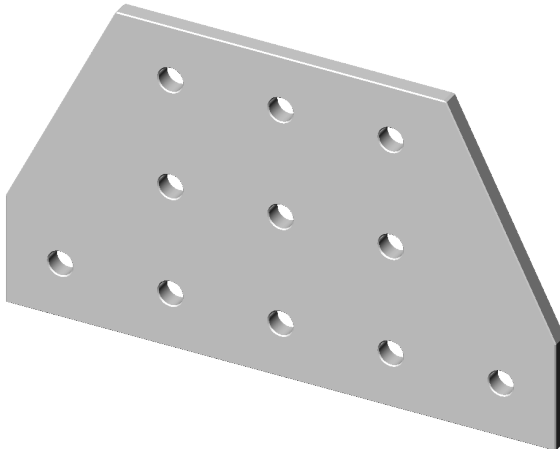
Aluminum Attachment Plate  
4-1/2 X 7-1/2 X 1/4  
Eleven 21/64 Diameter Holes  
Two Cut Corners  
Fits 15 Series T-Slot Extrusions

### Item #

15AP11-4575-C2

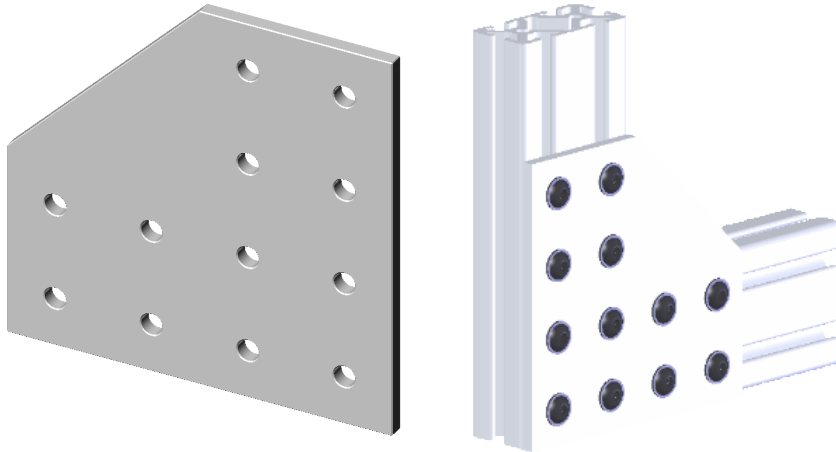
### Compare to:

Company	Item #
80 / 20	4421
Faztek	15JP4535



# 6 X 6 Twelve Hole Attachment Plate One Cut

Aluminum Attachment Plate  
6 X 6 X 1/4  
Twelve 21/64 Diameter Holes  
One Cut Corner  
Fits 15 Series T-Slot Extrusions

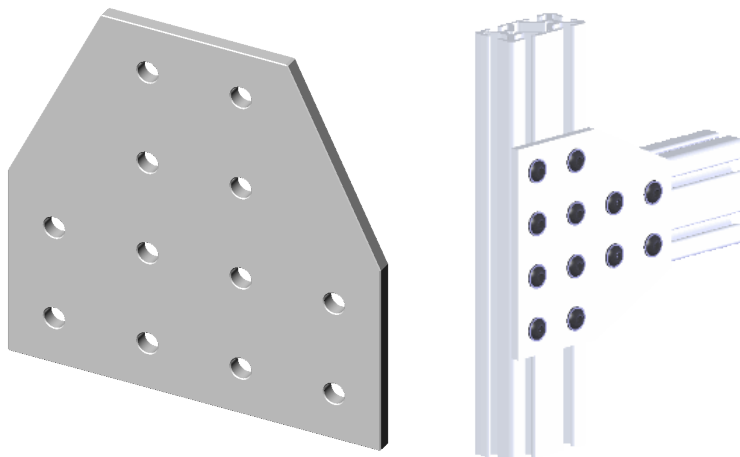


Item #
15AP12-6060-C

Compare to:	
Company	Item #
80 / 20	4328
Faztek	15JP4510
TSlots	653161
Frame-World	EB-27
AcuFrame	ACP-612
MainFrame	MFI-404
Parker IPS	20-307
Alu-Flex	CJP 66-12

# 6 X 6 Twelve Hole Attachment Plate Two Cuts

Aluminum Attachment Plate  
6 X 6 X 1/4  
Twelve 21/64 Diameter Holes  
Two Cut Corners  
Fits 15 Series T-Slot Extrusions

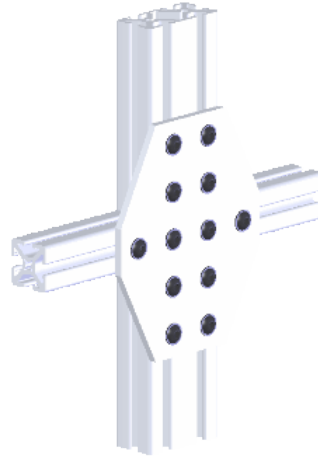
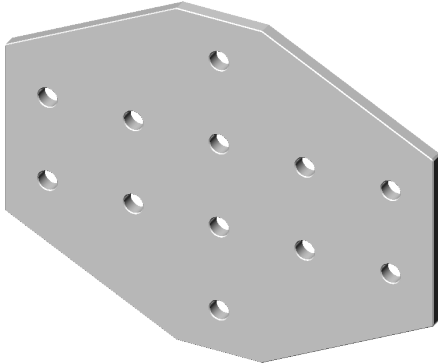


Item #
15AP12-6060-C2

Compare to:	
Company	Item #
80 / 20	4325
Faztek	15JP4520
TSlots	653158
Frame-World	EB-24
AcuFrame	ACP-612T
MainFrame	MFI-416
Parker IPS	20.306
Alu-Flex	TJP 36-12

## 6 X 7-1/2 Twelve Hole Attachment Plate Four Cuts

Aluminum Attachment Plate  
6 X 7-1/2 X 1/4  
Twelve 21/64 Diameter Holes  
Four Cut Corners  
Fits 15 Series T-Slot Extrusions



### Item #

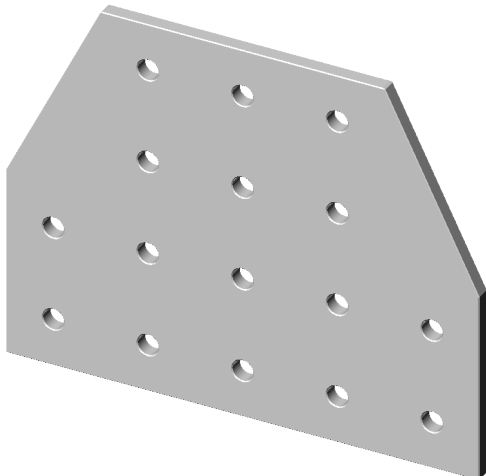
15AP12-6075-C4

### Compare to:

Company	Item #
80 / 20	4335
Faztek	15JP4526
TSlots	653168
Frame-World	EB-76
MainFrame	MFI-417
Alu-Flex	XJP 15-7

## 6 X 7-1/2 Sixteen Hole Attachment Plate Two Cuts

Aluminum Attachment Plate  
6 X 7-1/2 X 1/4  
Sixteen 21/64 Diameter Holes  
Two Cut Corners  
Fits 15 Series T-Slot Extrusions



### Item #

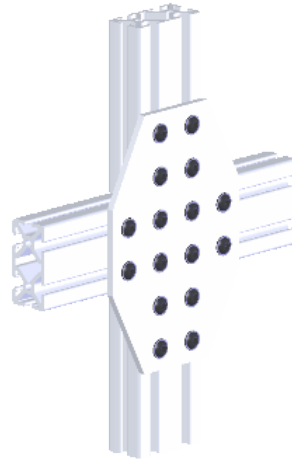
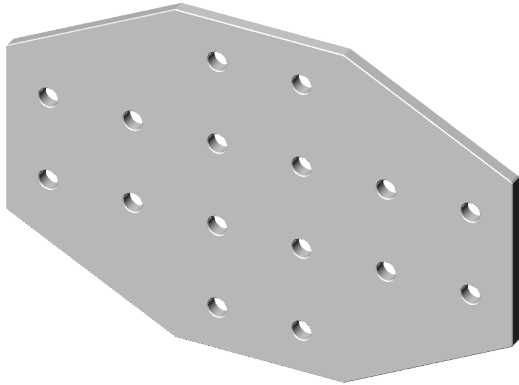
15AP16-6075-C2

### Compare to:

Company	Item #
80 / 20	4422
Faztek	15JP4536

## 6 X 9 Sixteen Hole Attachment Plate Four Cuts

Aluminum Attachment Plate  
6 X 9 X 1/4  
Sixteen 21/64 Diameter Holes  
Four Cut Corners  
Fits 15 Series T-Slot Extrusions

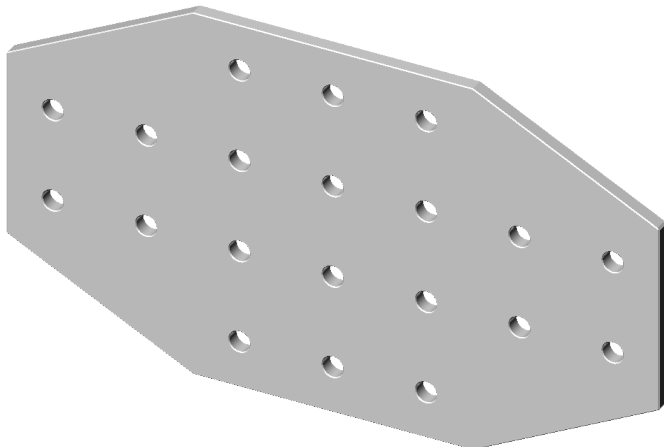


Item #
15AP16-6090-C4

Compare to:	
Company	Item #
80 / 20	4370
Faztek	15JP4511
TSlots	653200
Frame-World	EB-78
MainFrame	MFI-419

## 6 X 10-1/2 Twenty Hole Attachment Plate Four Cuts

Aluminum Attachment Plate  
6 X 10-1/2 X 1/4  
Twenty 21/64 Diameter Holes  
Four Cut Corners  
Fits 15 Series T-Slot Extrusions



Item #
15AP20-60105-C4

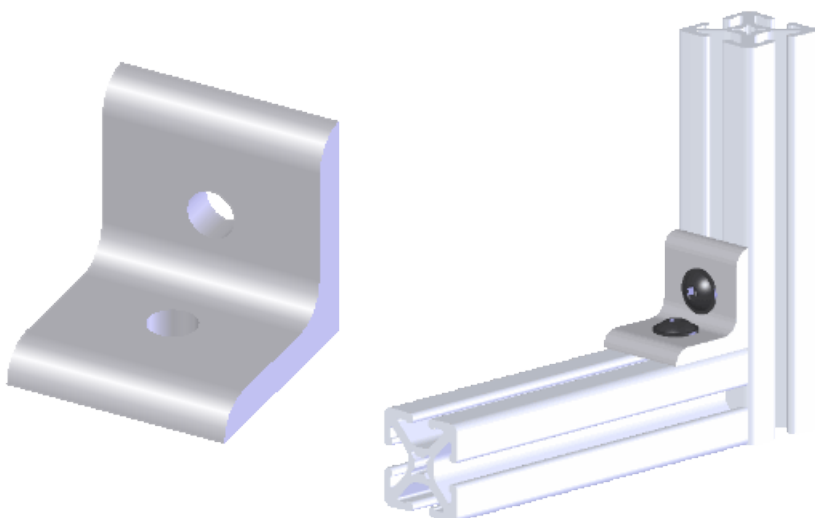
Compare to:	
Company	Item #
80 / 20	4423
Faztek	15JP4537
TSlots	653243

# 1-1/2 X 1-1/2 Two Hole Angle Bracket

Aluminum Angle Bracket  
1-1/2 X 1-1/2 X 1-1/2 X 1/4  
Two 21/64 Diameter Holes  
Fits 15 Series T-Slot Extrusions

Item #  
15L2-1515

Compare to:	
Company	Item #
80 / 20	4302
Faztek	15CB4801
TSlots	653136
Frame-World	EB-1
AcuFrame	AB-152
MainFrame	MFI-205
Parker PS	28-602
Alu-Flex	AB 1515-2

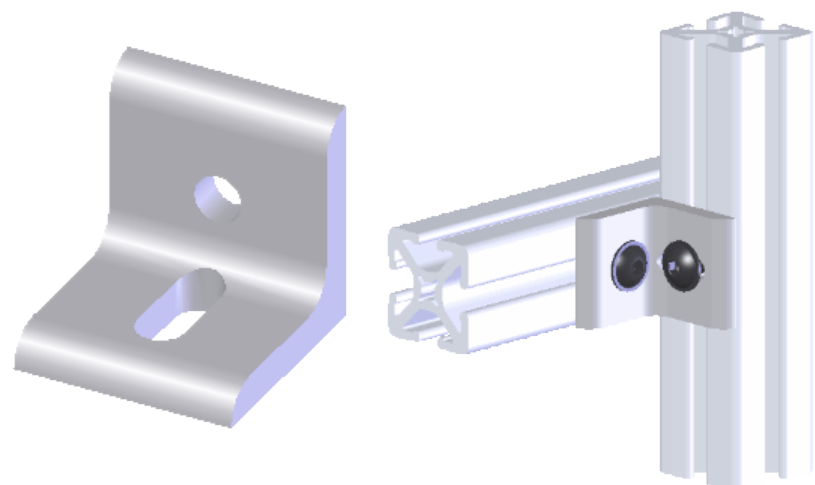


# 1-1/2 X 1-1/2 One Hole One Slot Angle Bracket

Aluminum Angle Bracket  
1-1/2 X 1-1/2 X 1-1/2 X 1/4  
One 21/64 Diameter Hole  
One Slot  
Fits 15 Series T-Slot Extrusions

Item #  
15L2-1515-S

Compare to:	
Company	Item #
80 / 20	4295
Faztek	15CB4000
TSlots	653133
Frame-World	EB-102
AcuFrame	AB-1525
MainFrame	MFI-216
Alu-Flex	AB 1515-2S



# 1-1/2 X 3 Three Hole Angle Bracket

Aluminum Angle Bracket

1-1/2 X 3 X 1-1/2 X 1/4

Three 21/64 Diameter Holes

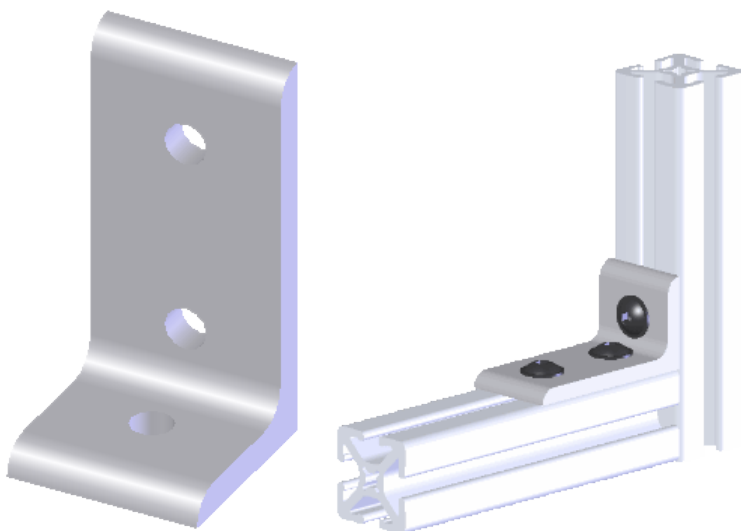
Fits 15 Series T-Slot Extrusions

Item #

15L3-1530

Compare to:

Company	Item #
80 / 20	4376
Faztek	15CB4802
TSlots	653204
Frame-World	EB-100
AcuFrame	AB-153
MainFrame	MFI-209
Alu-Flex	AB 15315



# 1-1/2 X 3 Two Hole One Slot Angle Bracket

Aluminum Angle Bracket

1-1/2 X 3 X 1-1/2 X 1/4

Two 21/64 Diameter Holes

One Slot

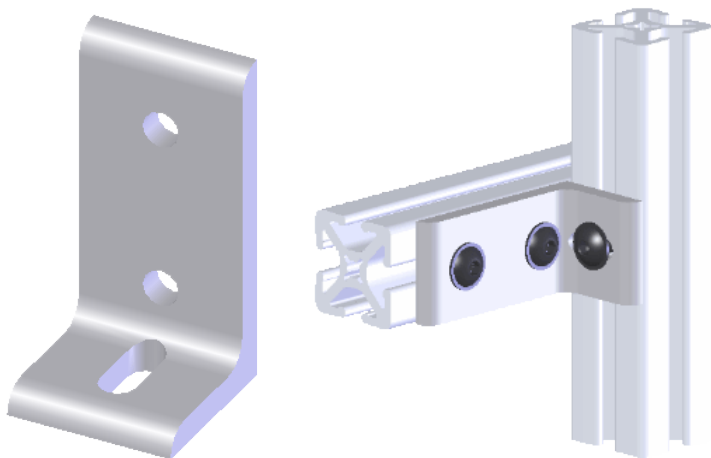
Fits 15 Series T-Slot Extrusions

Item #

15L3-1530-S

Compare to:

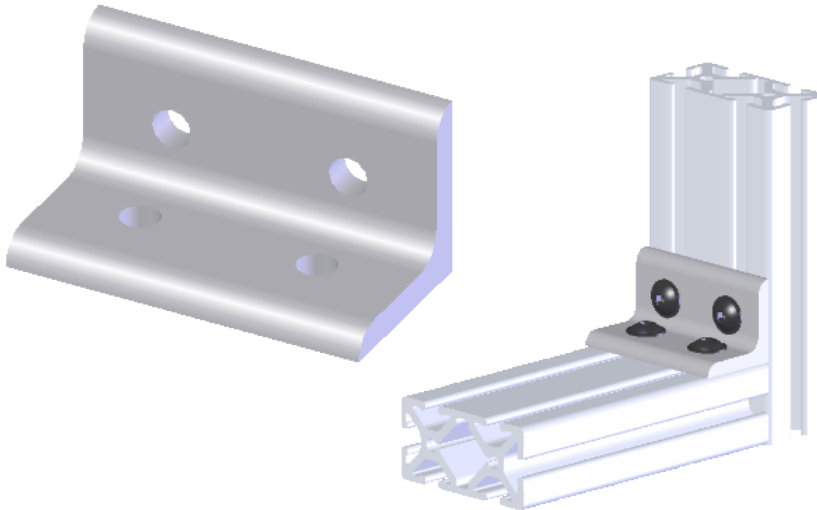
Company	Item #
80 / 20	4280
Faztek	15CB4005
TSlots	653128
Frame-World	EB-103
AcuFrame	AB-1535
MainFrame	MFI-217



Corner Brackets

# 1-1/2 X 1-1/2 Four Hole Angle Bracket

Aluminum Angle Bracket  
1-1/2 X 1-1/2 X 3 X 1/4  
Four 21/64 Diameter Holes  
Fits 15 Series T-Slot Extrusions

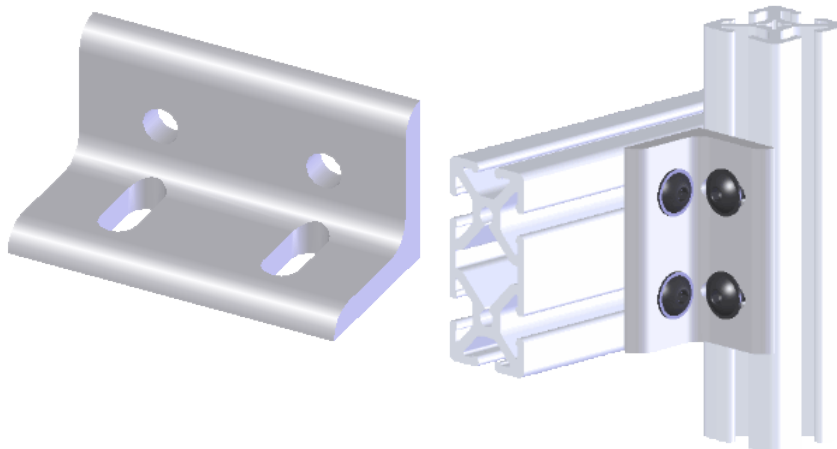


Item #
15L4-1515

Compare to:	
Company	Item #
80 / 20	4303
Faztek	15CB4803
TSlots	653137
Frame-World	EB-2
AcuFrame	AB-304
MainFrame	MFI-206
Parker PS	28-604
Alu-Flex	AB 31515-4

# 1-1/2 X 1-1/2 Two Hole Two Slot Angle Bracket

Aluminum Angle Bracket  
1-1/2 X 1-1/2 X 3 X 1/4  
Two 21/64 Diameter Holes  
Two Slots  
Fits 15 Series T-Slot Extrusions



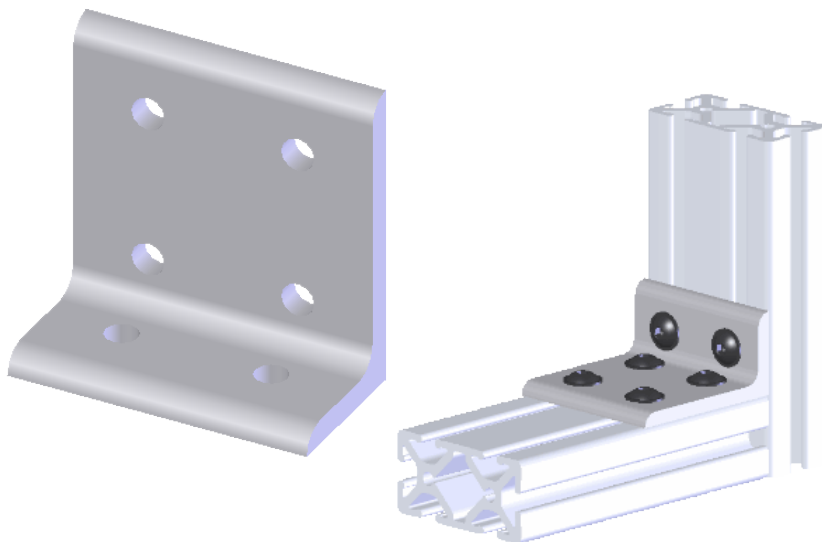
Item #
15L4-1515-S

Compare to:	
Company	Item #
80 / 20	4290
Faztek	15CB4002
TSlots	653132
AcuFrame	AB-3045
MainFrame	MFI-218



# 1-1/2 X 3 Six Hole Angle Bracket

Aluminum Angle Bracket  
1-1/2 X 3 X 3 X 1/4  
Six 21/64 Diameter Holes  
Fits 15 Series T-Slot Extrusions



Item #

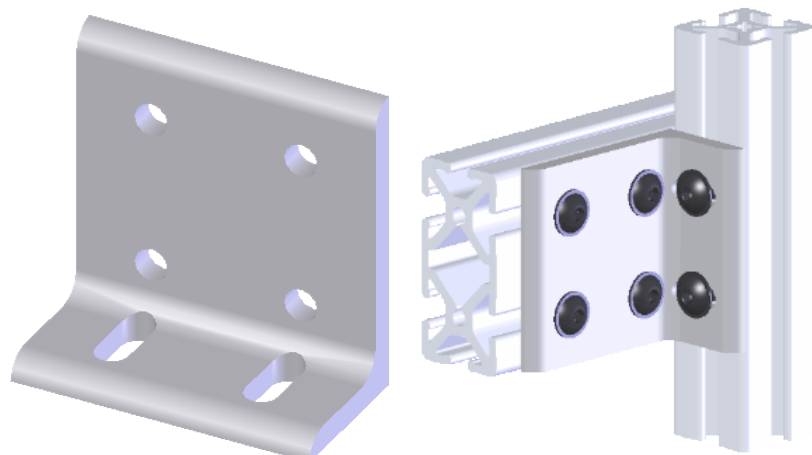
15L6-1530

Compare to:

Company	Item #
80 / 20	4375
Faztek	15CB4806
TSlots	653203
Frame-World	EB-101
AcuFrame	AB-306
MainFrame	MFI-211
Alu-Flex	AB 3315-6

# 1-1/2 X 3 Four Hole Two Slot Angle Bracket

Aluminum Angle Bracket  
1-1/2 X 3 X 3 X 1/4  
Four 21/64 Diameter Holes  
Two Slots  
Fits 15 Series T-Slot Extrusions



Item #

15L6-1530-S

Compare to:

Company	Item #
80 / 20	4285
Faztek	15CB4001
TSlots	653130
AcuFrame	AB-306S
MainFrame	MFI-219

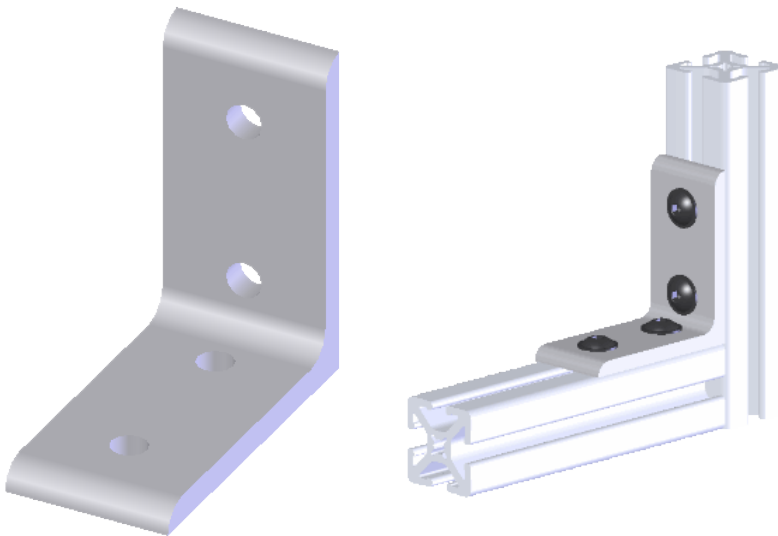
Corner Brackets

## 3 X 3 Four Hole Angle Bracket

Aluminum Angle Bracket  
3 X 3 X 1-1/2 X 1/4  
Four 21/64 Diameter Holes  
Fits 15 Series T-Slot Extrusions

Item #  
15L4-3030

Compare to:	
Company	Item #
80 / 20	4301
Faztek	15CB4804
TSlots	653135
Frame-World	EB-3
AcuFrame	AB-154
MainFrame	MFI-210
Parker PS	28-606
Alu-Flex	AB 1533-4

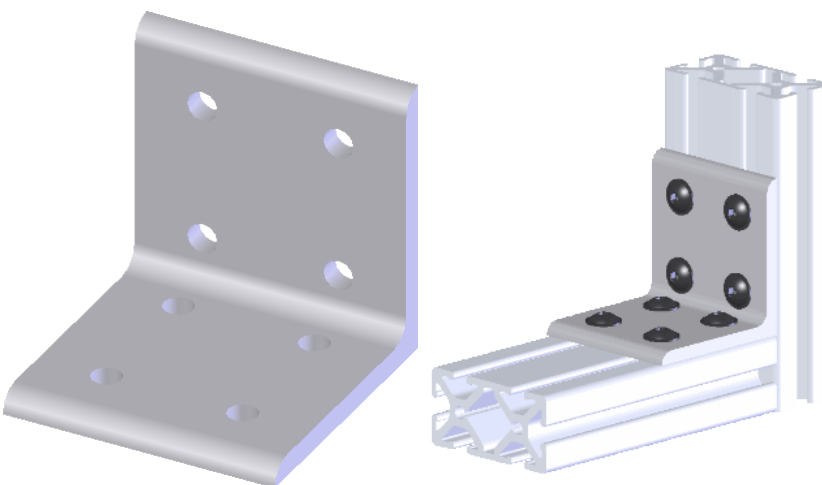


## 3 X 3 Eight Hole Angle Bracket

Aluminum Angle Bracket  
3 X 3 X 3 X 1/4  
Eight 21/64 Diameter Holes  
Fits 15 Series T-Slot Extrusions

Item #  
15L8-3030

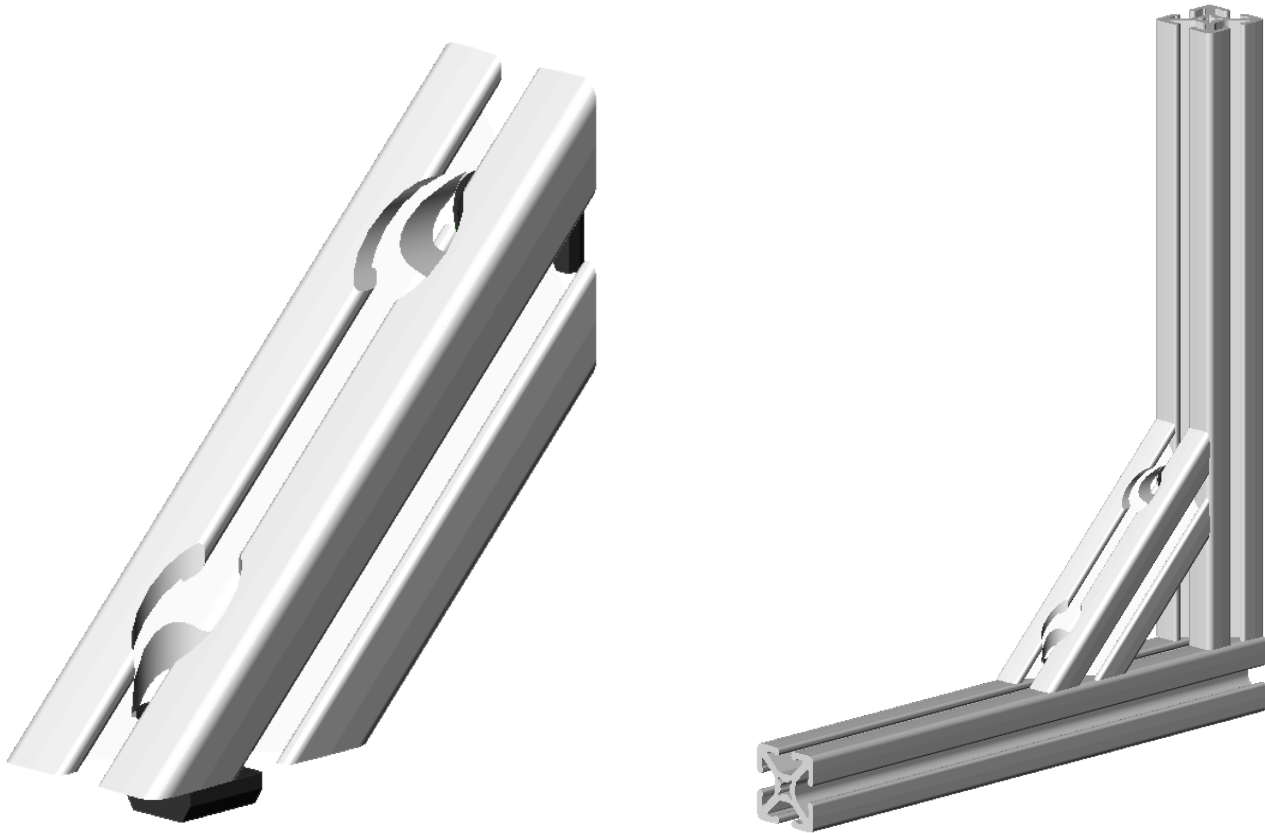
Compare to:	
Company	Item #
80 / 20	4304
Faztek	15CB4805
TSlots	653138
Frame-World	EB-4
AcuFrame	AB-308
MainFrame	MFI-212
Parker IPS	28-608
Alu-Flex	AB 333-8



# Aluminum Extrusion Corner Support

## Aluminum Extrusion Corner Support

All Corner Supports are designed to attach on interior 90 degree corners of 15 series frames. They come in 4 standard lengths; 6", 12", 18", and 24" in both 1515 and 1530 frames. Custom lengths and angles are available upon request. All Corner Supports include the Extrusion, Flanged Button Head Cap Screws, and T-Nuts.



Corner Supports

Length	6"	12"	18"	24"
PowerMount	1515CS-SM-600	1515CS-SM-1200	1515CS-SM-1800	1515CS-SM-2400
80 / 20	2546	2547	2548	2549
Faztek	15SP1870	15SP1871	15SP1872	15SP1873
TSlots	655355	655359	655363	655365
MainFrame	MFI-958	MFI-959	MFI-960	MFI-961

# Aluminum Extrusion Double Corner Support

## Aluminum Extrusion Double Corner Support

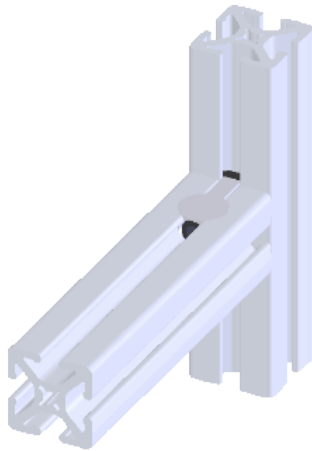
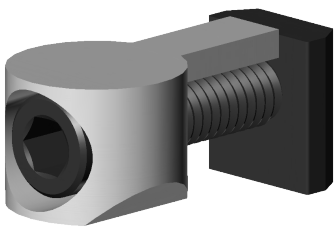
All Corner Supports are designed to attach on interior 90 degree corners of 15 series frames. They come in 4 standard lengths; 6", 12", 18", and 24" in both 1515 and 1530 frames. Custom lengths and angles are available upon request. All Corner Supports include the Extrusion, Flanged Button Head Cap Screws, and T-Nuts.



Length	6"	12"	18"	24"
PowerMount	1530CS-SM-600	1530CS-SM-1200	1530CS-SM-1800	1530CS-SM-2400
80 / 20	2569	2576	2577	2582
Faztek	15SP1878	15SP1879	15SP1880	15SP1881
TSlots	655357	655361	655364	655366
MainFrame	MFI-962	MFI-963	MFI-964	MFI-9645

## 5/16-18 Anchor Fastener

Anchor Fastener Assembly  
Includes 5/16-18  
Socket Head Cap Screw and  
Standard 5/16-18 T-Nut  
Fits 15 Series T-Slot Extrusions



Item #

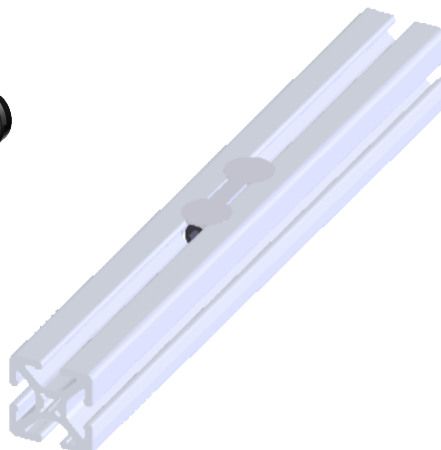
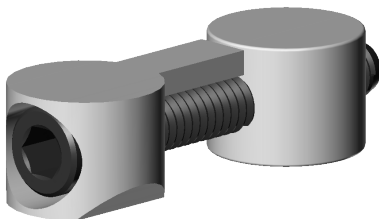
15-AF-31

Compare to:

Company	Item #
80 / 20	3360
Faztek	15FAC3880
TSlots	651146
Frame-World	EF-62
MainFrame	MFI-677
Parker PS	25-004
Alu-Flex	UEF

## 5/16-18 Butt Fastener Assembly

Butt Fastener Assembly  
Includes 5/16-18  
Socket Head Cap Screw  
Fits 15 Series T-Slot Extrusions



Item #

15-BF-31

Compare to:

Company	Item #
80 / 20	3370
Faztek	15FAC3886
TSlots	651154
Frame-World	EF-61
AcuFrame	AF-15BC
MainFrame	MFI-676
Parker IPS	25-016

## 5/16-18 Double Anchor Fastener

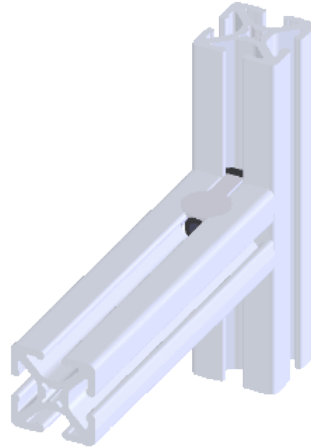
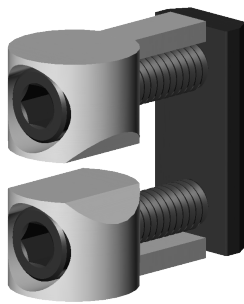
Anchor Fastener Assembly  
Includes 2 5/16-18 Socket Head  
Cap Screws and Special  
Standard 5/16-18 T-Nut  
Fits 1515 or 1530 (short side)  
T-Slot Extrusions

Item #

15-AF-DBL-1515

Compare to:

Company	Item #
80 / 20	3098
Faztek	15FAC3882
TSlots	651044



## 5/16-18 Double Anchor Fastener

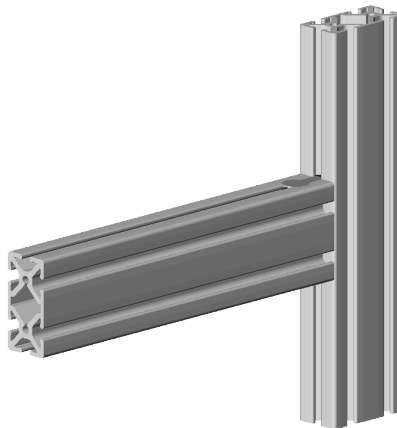
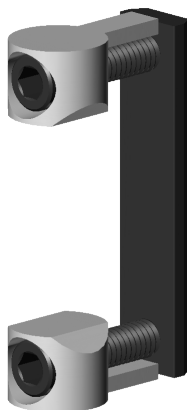
Anchor Fastener Assembly  
Includes 2 5/16-18 Socket Head  
Cap Screws and Special  
Standard 5/16-18 T-Nut  
Fits 1530 T-Slot Extrusions

Item #

15-AF-DBL-1530

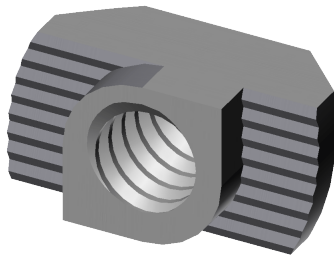
Compare to:

Company	Item #
80 / 20	3099
Faztek	15FAC3884
TSlots	651045



# 1/4-20 Quarter Turn Drop-In T-Nut

Quarter Turn Drop-In T-Nut  
Fits 15 Series T-Slot Extrusions  
1/4-20 Hole



Item #

15-QT-25

Compare to:

Company

Item #

80 / 20

3933

Frame-World

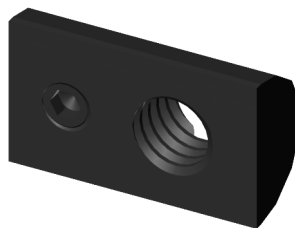
EF-96

Alu-Flex

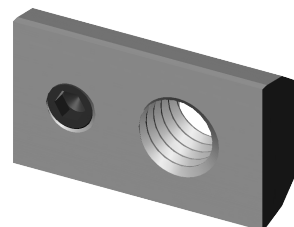
TN 1/4

## Drop-In T-Nut with Set Screw

Drop-In T-Nut  
Set Screw  
Fits 15 Series  
T-Slot Extrusions



U.S. Standard Sizes  
available in  
Black Zinc

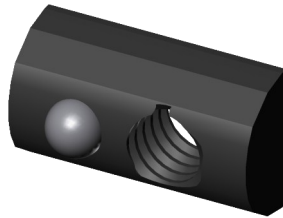


Metric Sizes available  
in Bright Zinc

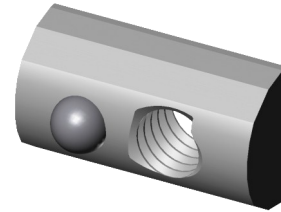
Hole Size	1/4-20	5/16-18	M6x10	M8x1.25
PowerMount	15-DS-25	15-DS-31	15-DS-M6	15-DS-M8
80 / 20	3310	3311	3898	3894
Faztek	15FA3405	15FA3505		
TSlots	651123	651124	651425	651421
Frame-World	EF-66	EF-65	EF-69	EF-68
AcuFrame	AF-1520P	AF-15185		
MainFrame	MFI-647	MFI-646	MM-647	MM-646

# Drop-In T-Nut with Spring Ball

Drop-In T-Nut  
Spring Ball  
Fits 15 Series  
T-Slot Extrusions



U.S. Standard Sizes  
available in  
Black Zinc

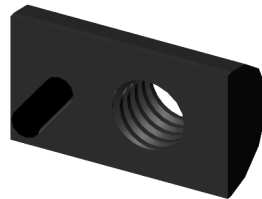


Metric Sizes available  
in Bright Zinc

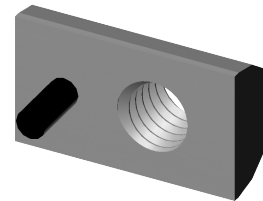
Hole Size	10-32	1/4-20	5/16-18	M3x0.5	M4x0.7	M5x0.8	M6x1.0	M8x1.25
PowerMount	15-DB-10	15-DB-25	15-DB-31	15-DB-M3	15-DB-M4	15-DB-M5	15-DB-M6	15-DB-M8
80 / 20	13039	3916	3917			3913	3914	3915
Faztek	15FA3534	15FA3536	15FA3511			15MFA3938	15MFA3928	15MFA3923
TSlots	651468	651644	651645			651846	651847	651848
Frame-World	EF-93	EF-92	EF-91				EF-95	EF-94
MainFrame	MFI-648-1	MFI-647-1	MFI-646-1					MM-646-1
Parker IPS	25-009	25-001	25-002					20-065

# Drop-In T-Nut with Flex Handle

Drop-In T-Nut  
Flex Handle  
Fits 15 Series  
T-Slot Extrusions



U.S. Standard Sizes  
available in  
Black Zinc



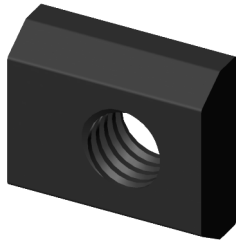
Metric Sizes available  
in Bright Zinc

Hole Size	10-32	1/4-20	5/16-18	M5x0.8	M6x1.0	M8x1.25
PowerMount	15-DT-10	15-DT-25	15-DT-31	15-DT-M5	15-DT-M6	15-DT-M8
80 / 20	3284	3283	3282	3844	3843	3842
Faztek	15FA3509	15FA3507	15FA3504		15MFA3902	15MFA3922
TSlots	651103	651319	651101		651319	651371
Frame-World	EF-1B	EF-1A	EF-1		EF-1D	EF-1C
MainFrame	MFI-648				MM-647	MM-648
Parker IPS	25-005	25-006		20-095	20-096	20-098

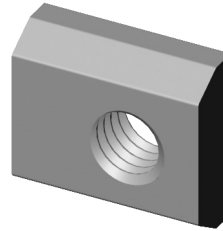


# Standard T-Nut

Standard T-Nut  
Fits 15 Series  
T-Slot Extrusions



U.S. Standard Sizes  
available in  
Black Zinc

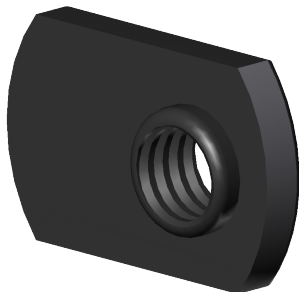


Metric Sizes available  
in Bright Zinc

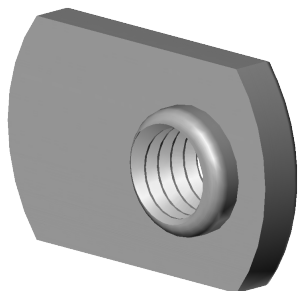
Hole Size	10-32	1/4-20	5/16-18	M5x0.8	M6x1.0	M8x1.25
PowerMount	15-ST-10	15-ST-25	15-ST-31	15-ST-M5	15-ST-M6	15-ST-M8
80 / 20	3201	3202	3203		3866	3868
Faztek	15FA3513	15FA3403	15FA3503	15MFA3925		15MFA3921
TSlots	651072	651073	651074		651393	651395
Frame-World	EF-57	EF-56	EF-55		EF-59	EF-58

# Economy T-Nut

Economy T-Nut  
Fits 15 Series T-Slot Extrusions



U.S. Standard Sizes  
available in  
Black Zinc



Metric Sizes available  
in Bright Zinc

Hole Size	5/16-18	M8x1.25
PowerMount	15-ET-31	15-ET-M8
80 / 20	3278	3838
Faztek	15FA3501	15MFA3920
TSlots	651097	651387
Frame-World	EF-2	
AcuFrame	AF-1518	
MainFrame	MFI-635	MM-635
Parker IPS	25-182	20-181
Alu-Flex	EN 5/16	

## 5/16-18 Double Economy T-Nut

Double Economy T-Nut  
5/16-18 Holes  
Fits 15 Series T-Slot Extrusions

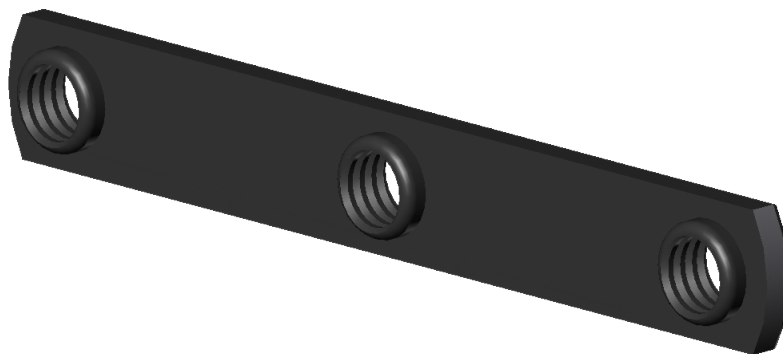


Item #
15-ETD-31

Compare to:	
Company	Item #
80 / 20	3279
Faztek	15FA3520
TSlots	651098
Frame-World	EF-2D
MainFrame	MFI-645

## 5/16-18 Triple Economy T-Nut

Triple Economy T-Nut  
5/16-18 Holes  
Fits 15 Series T-Slot Extrusions



Item #
15-ETT-31

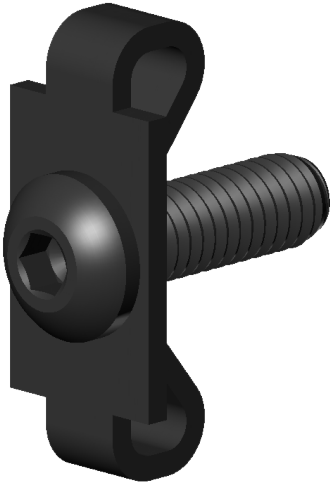
Compare to:	
Company	Item #
80 / 20	3285
Faztek	15FA3502
TSlots	651104
MainFrame	MFI-663

## 5/16-18 X 1.00 BHCS End Fastener

### End Fastener

Fits 15 Series T-Slot Extrusions

Includes 5/16-18 x 1.00 Button Head  
Cap Screw and Alignment Plate



#### Item #

15-EF-31

#### Compare to:

Company	Item #
80 / 20	3380
Faztek	15FAC3865
TSlots	651161
Frame-World	EF-29
AcuFrame	AF-B15UC
MainFrame	MFI-657
Alu-Flex	EFC

## 5/16-18 X 1.00 BHCS Single Tab End Fastener

### Single Tab End Fastener

Fits 15 Series T-Slot Extrusions

Includes 5/16-18 X 1.00 Button Head  
Cap Screw and Single Tab Alignment  
Plate



#### Item #

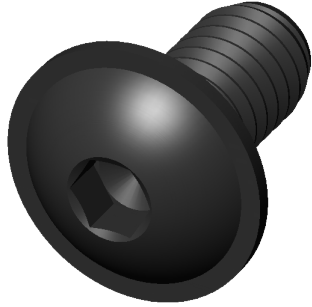
15-ETS-31

#### Compare to:

Company	Item #
80 / 20	3389
TSlots	651501
Frame-World	EF-29A
AcuFrame	AF-B15PC

# 5/16-18 X 5/8 Flanged Button Head Cap

Flanged Button Head Cap Screw  
5/16-18 X 5/8 Long



Item #

FBHCS-31-18X63

Compare to:

Company	Item #
80 / 20	3330
Faztek	15Fa3331
TSlots	651134
Frame-World	EF-12-.63
MainFrame	MFI-629

# Black Plastic End Cap Kit

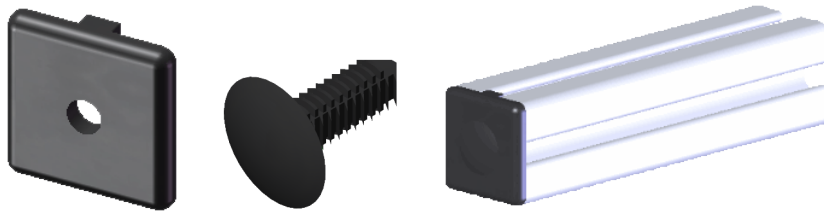
Kit includes:

(1) Black Plastic End Cap (15-EC)

(1) Xmas Tree Clip (CR-31)

Fits 15 Series T-Slot Extrusions

\* Black Plastic End Cap & Xmas Tree Clip also sold separately



Item #

15-EC-K

Compare to:

Company

Item #

80 / 20

2030

Faztek

15AC7925

TSlots

655025

Frame-World

EF-19-A

AcuFrame

AA-15EC

MainFrame

MFI-902

Parker IPS

18-916

# Two Hole Black Plastic End Cap Kit

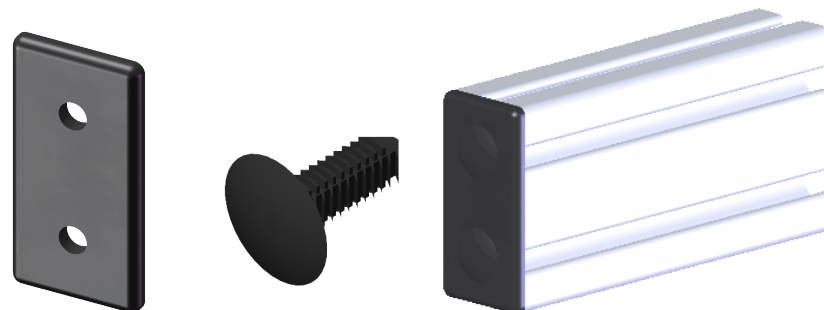
Kit includes:

(1) Two Hole End Cap (15-EC2)

(2) Xmas Tree Clip (CR-31)

Fits 15 Series T-Slot Extrusions

\* Black Plastic End Cap & Xmas Tree Clip also sold separately



Item #

15-EC2-K

Compare to:

Company

Item #

80 / 20

2045

Faztek

15AC7930

TSlots

655035

Frame-World

EF-19-B

AcuFrame

AA-1530EC

MainFrame

MFI-903

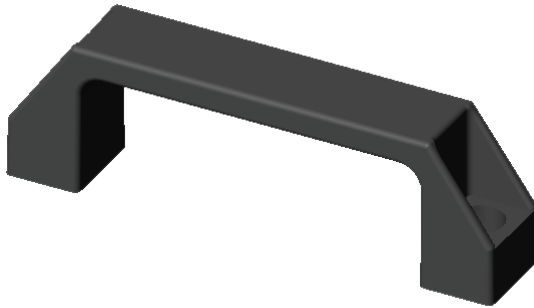
Parker IPS

18-914

Handles & Caps

# Black Plastic Handle

Black Plastic Handle  
Fits 15 Series T-Slot Extrusions



Item #	Compare to:	
15-HAN	Company	Item #
	80 / 20	2061
	Faztek	15AC7301
	TSlots	655059
	Frame-World	EF-15B
	MainFrame	MFI-906

# 3 X 1-1/2 Phenolic Rigid Caster

Phenolic Rigid Caster

3" Wheel

1-1/2" Tread Width

600 Pound Capacity

5-1/8" Load Height

Item #

4.03108.319

From the Manufacturer:

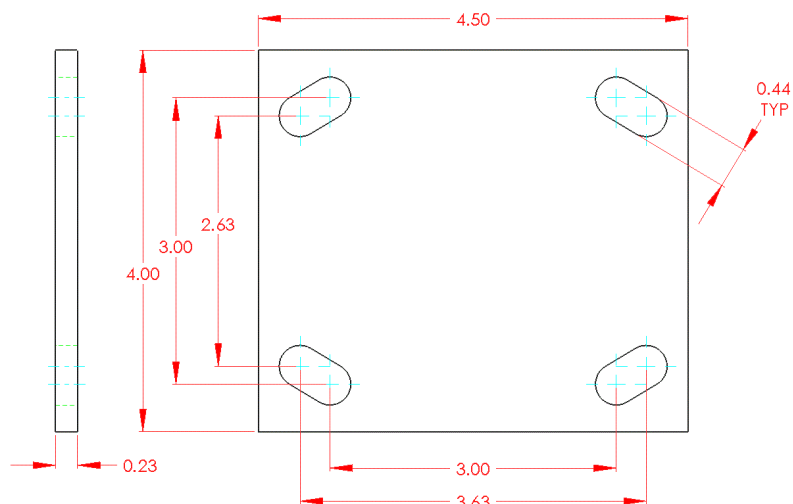
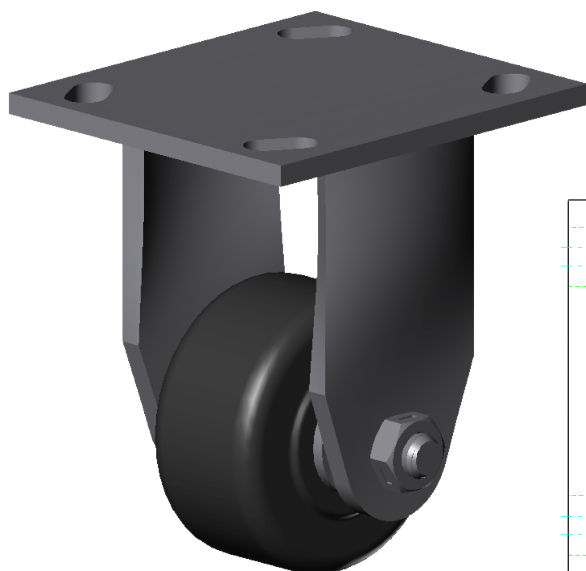
## Standard Features:

- Attractive zinc plated finish
- 1/2" hollow axle with grease zerk and lock nut
- Plastic seal/retainer washer (roller bearing models)
- 1/4" steel top plate for durability
- Grease fittings: wheel bearing
- "Colson 45" multi-temp grease lubricates in extreme hot and cold temperatures

Phenolic resin wheels filled with macerated fabric. Quieter than steel or aluminum, provides superior floor protection. Resistant to hard impacts and most chemicals and steam. Standard color is black.

**Temperature range:** -45°F to +180°F. If metal washers specified: -45°F to +250°F (Roller and Ball bearings only)

**Hardness:** 90 (±5) Shore D Scale



Casters

# 3 X 1-1/2 Phenolic Swivel Caster

Phenolic Swivel Caster

3" Wheel

1-1/2" Tread Width

600 Pound Capacity

5-1/8 Load Height

Item #

4.03109.319

From the Manufacturer:

## Standard Features:

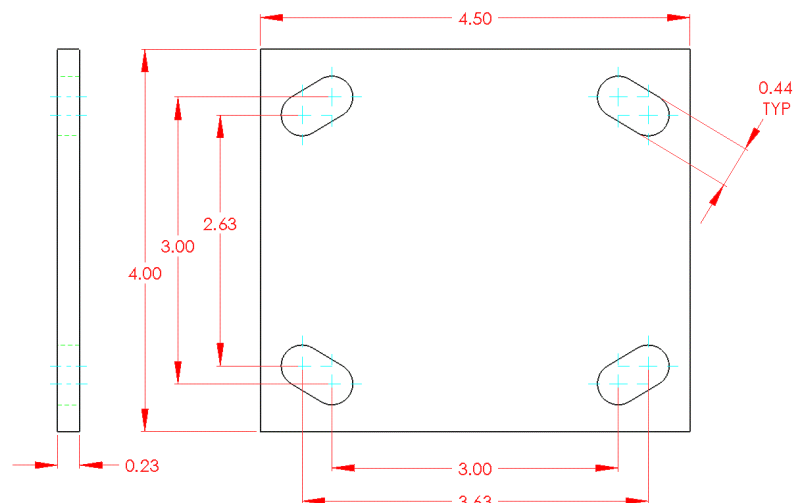
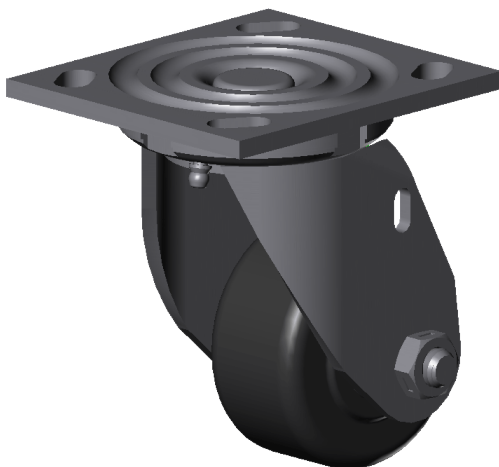
- Attractive zinc plated finish
- Full double ball hardened raceways
- 1/2" hollow axle with grease zerk and lock nut
- Plastic seal/retainer washer (roller bearing models)
- 1/4" steel top plate for durability
- Permanent rivet king pin with 5/8" diameter rivet
- Grease fittings: wheel bearing and swivel raceway
- "Colson 45" multi-temp grease lubricates in extreme hot and cold temperatures

All 4 Series swivel forks are notched to accommodate four position swivel locks.

Phenolic resin wheels filled with macerated fabric. Quieter than steel or aluminum, provides superior floor protection. Resistant to hard impacts and most chemicals and steam. Standard color is black.

**Temperature range:** -45°F to +180°F. If metal washers specified: -45°F to +250°F (Roller and Ball bearings only)

**Hardness:** 90 (±5) Shore D Scale





# 3 X 1-1/2 Polyurethane Hi-Tech Rigid Caster

Polyurethane Hi-Tech Rigid Caster

3" Wheel

1-1/2" Tread Width

300 Pound Capacity

5-1/8" Load Height

Item #

4.03108.919

From the Manufacturer:

## Standard Features:

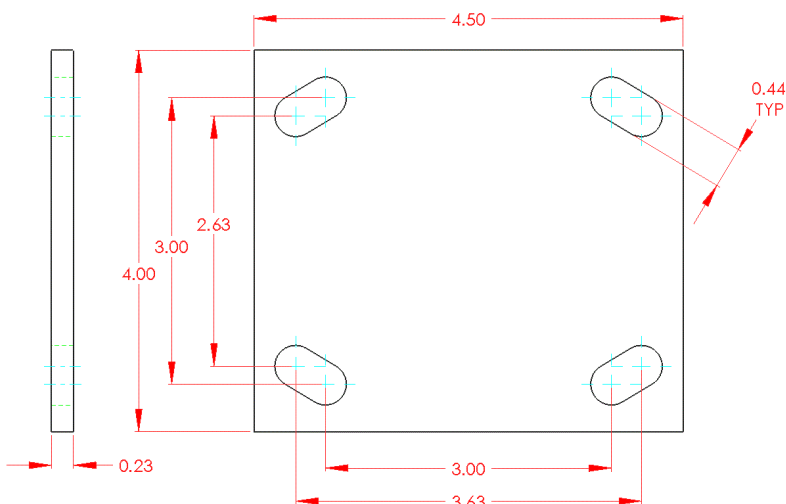
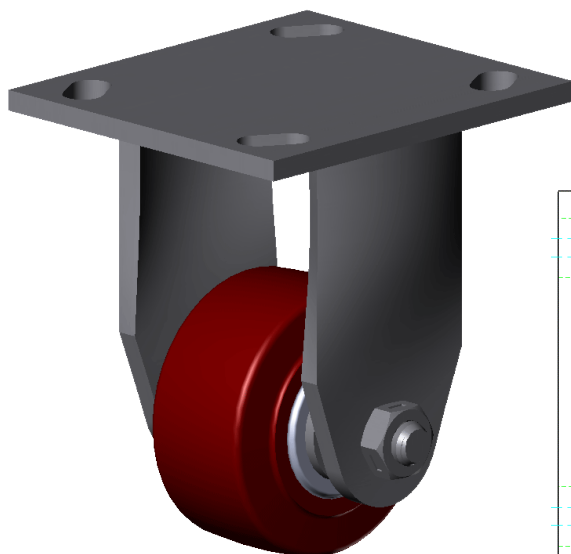
- Attractive zinc plated finish
- 1/2" hollow axle with grease zerk and lock nut
- Plastic seal/retainer washer (roller bearing models)
- 1/4" steel top plate for durability
- Grease fittings: wheel bearing
- "Colson 45" multi-temp grease lubricates in extreme hot and cold temperatures

Industrial strength polyurethane tread bonded to "ribbed" polyolefin core. This design adds strength for loads subjected to shock and hard impacts. Tread is molded in, around and through a ribbed extension of the core to prevent debonding. Standard colors are red tread on grey core.

**Not recommended for conditions of continuous operation such as tow-line, etc.**

**Temperature range:** -45°F to +180°F

**Hardness:** 55(±5) Durometer Shore D scale



# 3 X 1-1/2 Polyurethane Hi-Tech Swivel Caster

Polyurethane Hi-Tech Swivel Caster

3" Wheel

1-1/2" Tread Width

300 Pound Capacity

5-1/8" Load Height

Item #

4.03109.919

From the Manufacturer:

## Standard Features:

- Attractive zinc plated finish
- Full double ball hardened raceways
- 1/2" hollow axle with grease zerk and lock nut
- Plastic seal/retainer washer (roller bearing models)
- 1/4" steel top plate for durability
- Permanent rivet king pin with 5/8" diameter rivet
- Grease fittings: wheel bearing and swivel raceway
- "Colson 45" multi-temp grease lubricates in extreme hot and cold temperatures

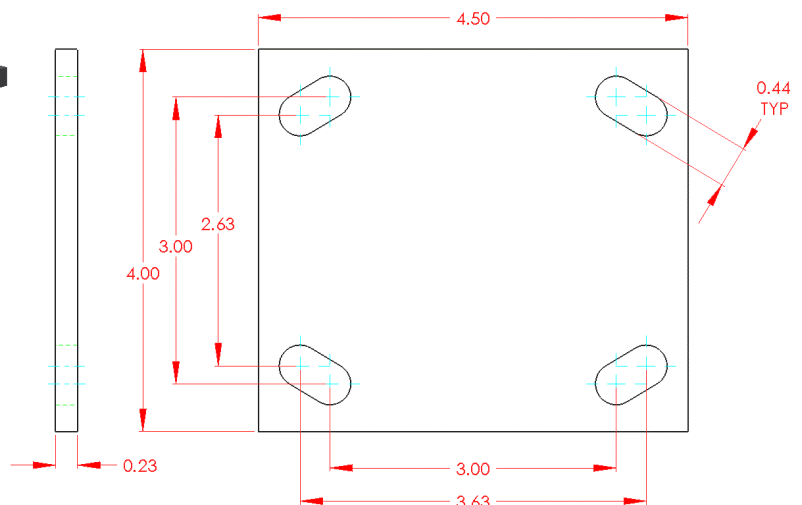
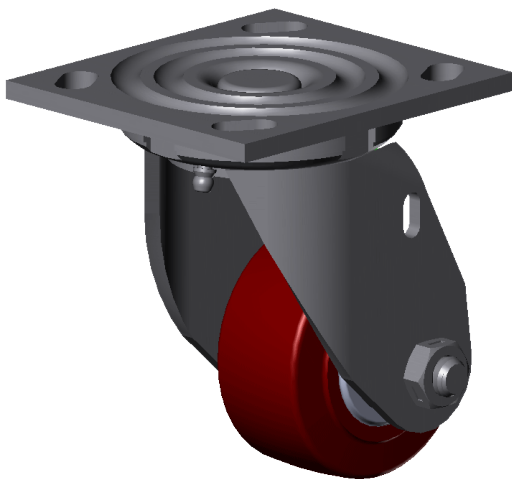
All 4 Series swivel forks are notched to accommodate four position swivel locks.

Industrial strength polyurethane tread bonded to "ribbed" polyolefin core. This design adds strength for loads subjected to shock and hard impacts. Tread is molded in, around and through a ribbed extension of the core to prevent debonding. Standard colors are red tread on grey core.

**Not recommended for conditions of continuous operation such as tow-line, etc.**

**Temperature range:** -45°F to +180°F.

**Hardness:** 55(±5) Durometer Shore D scale



# 4 X 2 Phenolic Rigid Caster

Phenolic Rigid Caster

4" Wheel

2" Tread Width

800 Pound Capacity

5-5/8" Load Height

Item #

4.04108.339

From the Manufacturer:

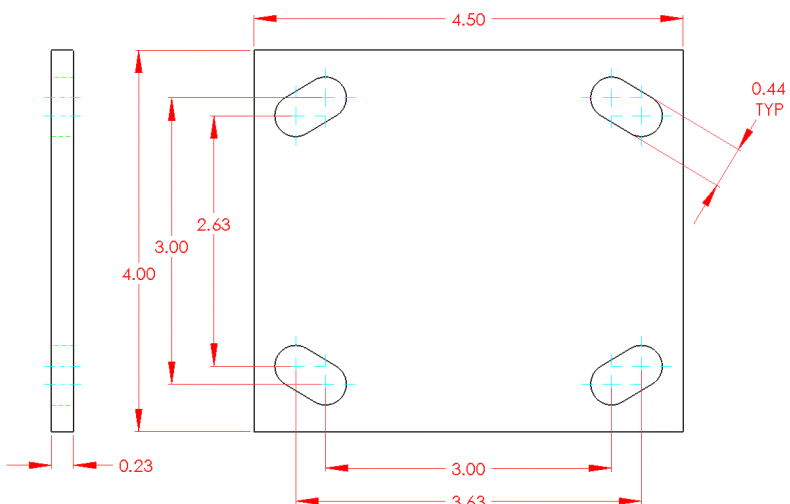
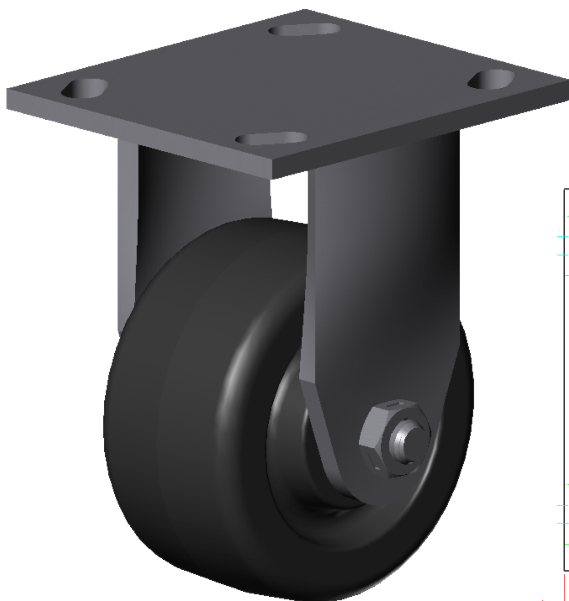
## Standard Features:

- Attractive zinc plated finish
- 1/2" hollow axle with grease zerk and lock nut
- Plastic seal/retainer washer (roller bearing models)
- 1/4" steel top plate for durability
- Grease fittings: wheel bearing
- "Colson 45" multi-temp grease lubricates in extreme hot and cold temperatures

Phenolic resin wheels filled with macerated fabric. Quieter than steel or aluminum, provides superior floor protection. Resistant to hard impacts and most chemicals and steam. Standard color is black.

**Temperature range:** -45°F to +180°F. If metal washers specified: -45°F to +250°F (Roller and Ball bearings only)

**Hardness:** 90 (±5) Shore D Scale



Casters

# 4 X 2 Phenolic Swivel Caster

Phenolic Swivel Caster

4" Wheel

2" Tread Width

800 Pound Capacity

5-5/8 Load Height

Item #

4.04109.339

From the Manufacturer:

## Standard Features:

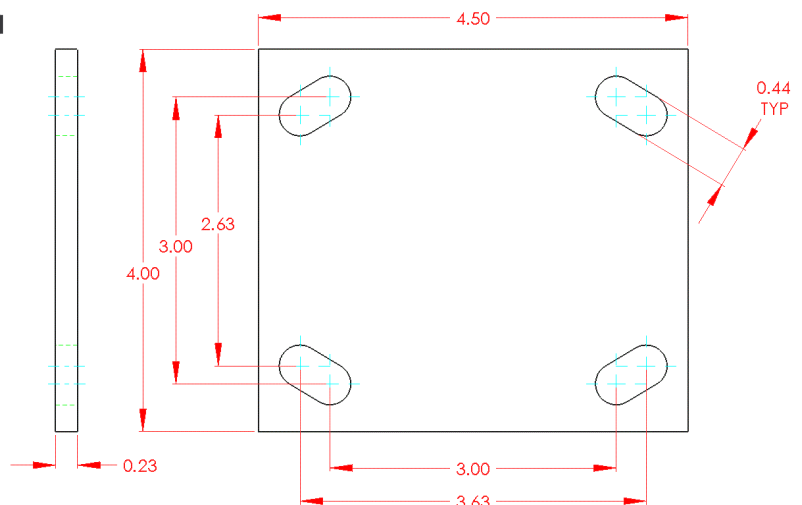
- Attractive zinc plated finish
- Full double ball hardened raceways
- 1/2" hollow axle with grease zerck and lock nut
- Plastic seal/retainer washer (roller bearing models)
- 1/4" steel top plate for durability
- Permanent rivet king pin with 5/8" diameter rivet
- Grease fittings: wheel bearing and swivel raceway
- "Colson 45" multi-temp grease lubricates in extreme hot and cold temperatures

All 4 Series swivel forks are notched to accommodate four position swivel locks.

Phenolic resin wheels filled with macerated fabric. Quieter than steel or aluminum, provides superior floor protection. Resistant to hard impacts and most chemicals and steam. Standard color is black.

**Temperature range:** -45°F to +180°F. If metal washers specified: -45°F to +250°F (Roller and Ball bearings only)

**Hardness:** 90 (±5) Shore D Scale



# 4 X 2 Polyurethane Hi-Tech Rigid Caster

Polyurethane Hi-Tech Rigid Caster

4" Wheel

2" Tread Width

600 Pound Capacity

5-5/8" Load Height

Item #

4.04108.929

From the Manufacturer:

## Standard Features:

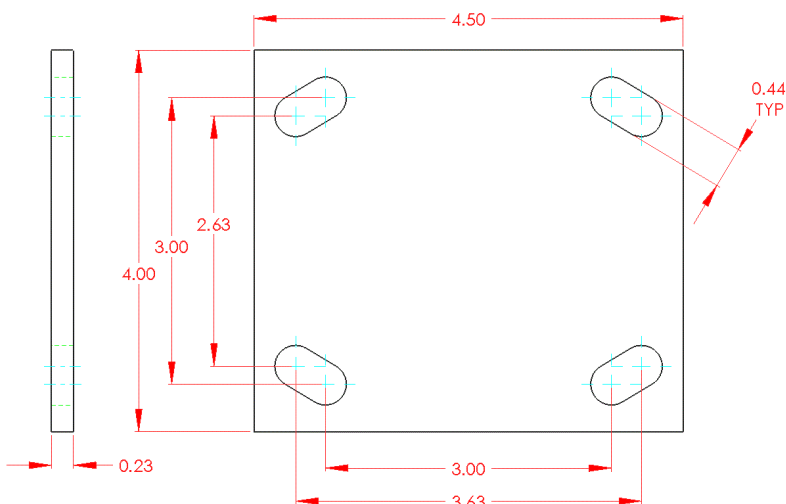
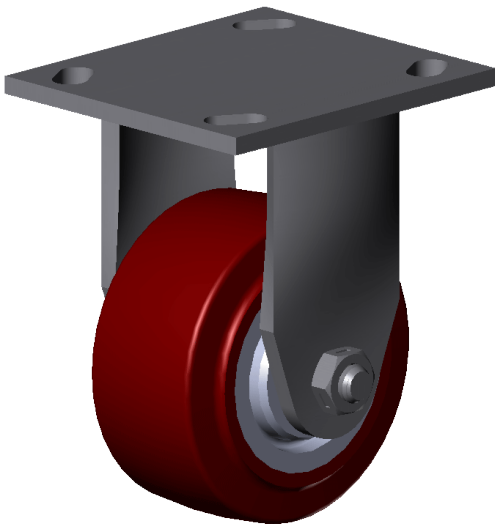
- Attractive zinc plated finish
- 1/2" hollow axle with grease zerk and lock nut
- Plastic seal/retainer washer (roller bearing models)
- 1/4" steel top plate for durability
- Grease fittings: wheel bearing
- "Colson 45" multi-temp grease lubricates in extreme hot and cold temperatures

Industrial strength polyurethane tread bonded to "ribbed" polyolefin core. This design adds strength for loads subjected to shock and hard impacts. Tread is molded in, around and through a ribbed extension of the core to prevent debonding. Standard colors are red tread on grey core.

**Not recommended for conditions of continuous operation such as tow-line, etc.**

**Temperature range:** -45°F to +180°F

**Hardness:** 55(±5) Durometer Shore D scale



Casters

# 4 X 2 Polyurethane Hi-Tech Swivel Caster

Polyurethane Hi-Tech Swivel Caster

4" Wheel

2" Tread Width

600 Pound Capacity

5-5/8 Load Height

Item #

4.04109.929

From the Manufacturer:

## Standard Features:

- Attractive zinc plated finish
- Full double ball hardened raceways
- 1/2" hollow axle with grease zerk and lock nut
- Plastic seal/retainer washer (roller bearing models)
- 1/4" steel top plate for durability
- Permanent rivet king pin with 5/8" diameter rivet
- Grease fittings: wheel bearing and swivel raceway
- "Colson 45" multi-temp grease lubricates in extreme hot and cold temperatures

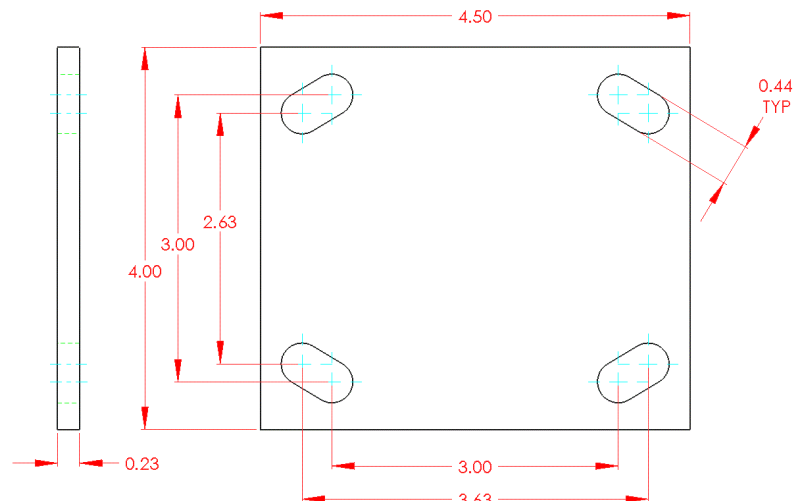
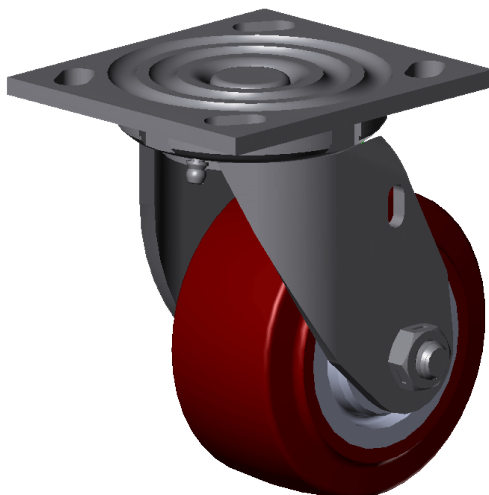
All 4 Series swivel forks are notched to accommodate four position swivel locks.

Industrial strength polyurethane tread bonded to "ribbed" polyolefin core. This design adds strength for loads subjected to shock and hard impacts. Tread is molded in, around and through a ribbed extension of the core to prevent debonding. Standard colors are red tread on grey core.

**Not recommended for conditions of continuous operation such as tow-line, etc.**

**Temperature range:** -45°F to +180°F

**Hardness:** 55(±5) Durometer Shore D scale



# 5 X 2 Phenolic Rigid Caster

Phenolic Rigid Caster

5" Wheel

2" Tread Width

900 Pound Capacity

6-1/2" Load Height

Item #

4.05108.339

From the Manufacturer:

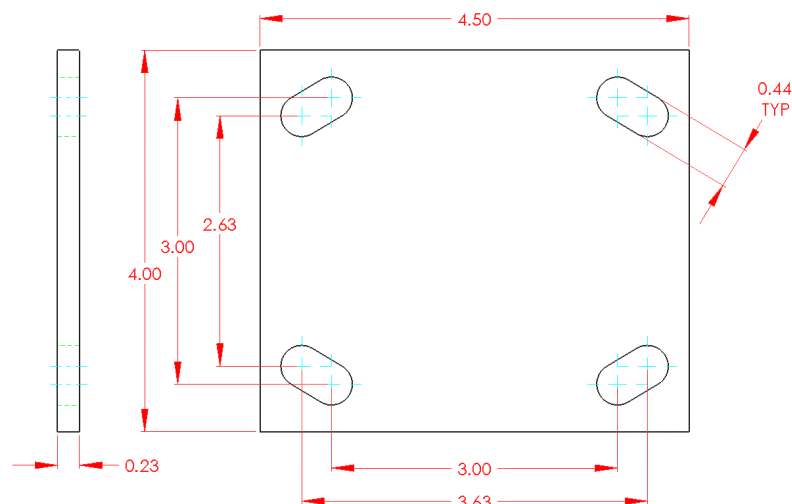
## Standard Features:

- Attractive zinc plated finish
- 1/2" hollow axle with grease zerk and lock nut
- Plastic seal/retainer washer (roller bearing models)
- 1/4" steel top plate for durability
- Grease fittings: wheel bearing
- "Colson 45" multi-temp grease lubricates in extreme hot and cold temperatures

Phenolic resin wheels filled with macerated fabric. Quieter than steel or aluminum, provides superior floor protection. Resistant to hard impacts and most chemicals and steam. Standard color is black.

**Temperature range:** -45°F to +180°F. If metal washers specified: -45°F to +250°F (Roller and Ball bearings only)

**Hardness:** 90 (±5) Shore D Scale



Casters

# 5 X 2 Phenolic Swivel Caster

Phenolic Swivel Caster

5" Wheel

2" Tread Width

900 Pound Capacity

6-1/2 Load Height

Item #

4.05109.339

From the Manufacturer:

## Standard Features:

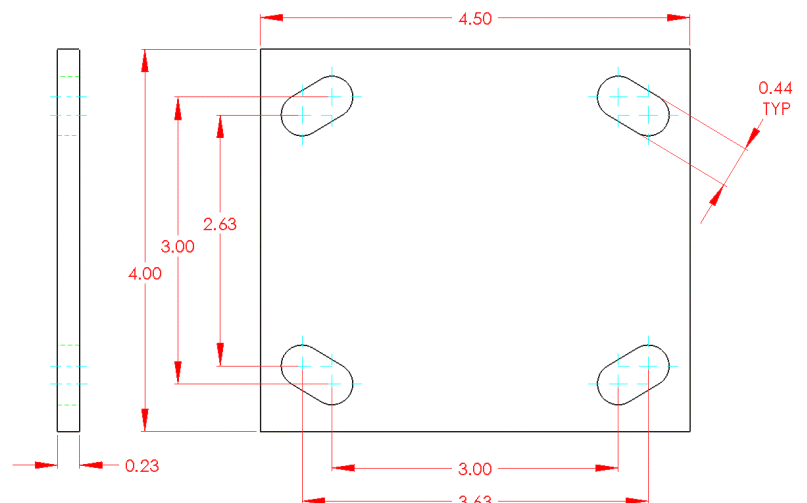
- Attractive zinc plated finish
- Full double ball hardened raceways
- 1/2" hollow axle with grease zerk and lock nut
- Plastic seal/retainer washer (roller bearing models)
- 1/4" steel top plate for durability
- Permanent rivet king pin with 5/8" diameter rivet
- Grease fittings: wheel bearing and swivel raceway
- "Colson 45" multi-temp grease lubricates in extreme hot and cold temperatures

All 4 Series swivel forks are notched to accommodate four position swivel locks.

Phenolic resin wheels filled with macerated fabric. Quieter than steel or aluminum, provides superior floor protection. Resistant to hard impacts and most chemicals and steam. Standard color is black.

**Temperature range:** -45°F to +180°F. If metal washers specified: -45°F to +250°F (Roller and Ball bearings only)

**Hardness:** 90 (±5) Shore D Scale





# 5 X 2 Polyurethane Hi-Tech Rigid Caster

Polyurethane Hi-Tech Rigid Caster

5" Wheel

2" Tread Width

750 Pound Capacity

6-1/2" Load Height

Item #

4.05108.929

From the Manufacturer:

## Standard Features:

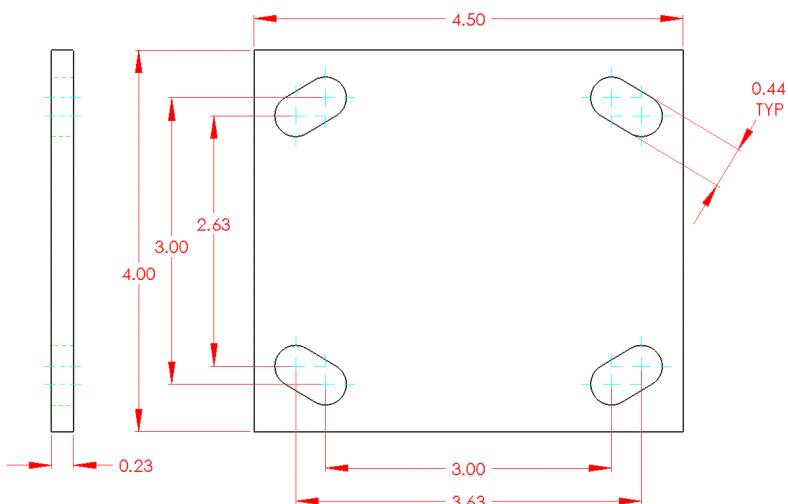
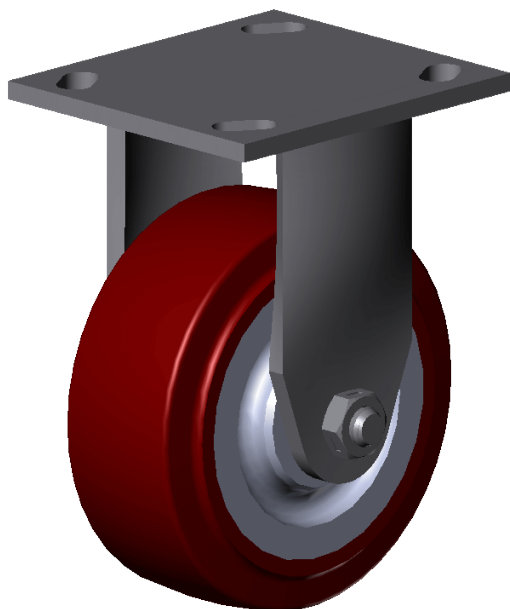
- Attractive zinc plated finish
- 1/2" hollow axle with grease zerk and lock nut
- Plastic seal/retainer washer (roller bearing models)
- 1/4" steel top plate for durability
- Grease fittings: wheel bearing
- "Colson 45" multi-temp grease lubricates in extreme hot and cold temperatures

Industrial strength polyurethane tread bonded to "ribbed" polyolefin core. This design adds strength for loads subjected to shock and hard impacts. Tread is molded in, around and through a ribbed extension of the core to prevent debonding. Standard colors are red tread on grey core.

**Not recommended for conditions of continuous operation such as tow-line, etc.**

**Temperature range:** -45°F to +180°F

**Hardness:** 55(±5) Durometer Shore D scale



Casters

# 5 X 2 Polyurethane Hi-Tech Swivel Caster

Polyurethane Hi-Tech Swivel Caster

5" Wheel

2" Tread Width

750 Pound Capacity

6-1/2" Load Height

Item #

4.05109.929

From the Manufacturer:

## Standard Features:

- Attractive zinc plated finish
- Full double ball hardened raceways
- 1/2" hollow axle with grease zerck and lock nut
- Plastic seal/retainer washer (roller bearing models)
- 1/4" steel top plate for durability
- Permanent rivet king pin with 5/8" diameter rivet
- Grease fittings: wheel bearing and swivel raceway
- "Colson 45" multi-temp grease lubricates in extreme hot and cold temperatures

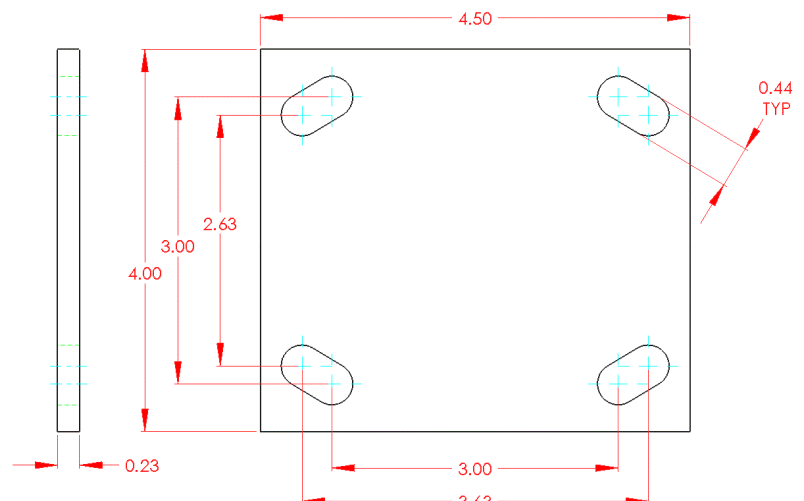
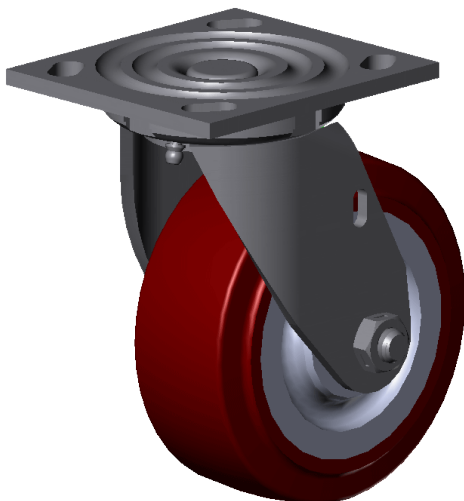
All 4 Series swivel forks are notched to accommodate four position swivel locks.

Industrial strength polyurethane tread bonded to "ribbed" polyolefin core. This design adds strength for loads subjected to shock and hard impacts. Tread is molded in, around and through a ribbed extension of the core to prevent debonding. Standard colors are red tread on grey core.

**Not recommended for conditions of continuous operation such as tow-line, etc.**

**Temperature range:** -45°F to +180°F

**Hardness:** 55(±5) Durometer Shore D scale



# 6 X 2 Phenolic Rigid Caster

Phenolic Rigid Caster

6" Wheel

2" Tread Width

900 Pound Capacity

7-1/2 Load Height

Item #

4.06108.339

From the Manufacturer:

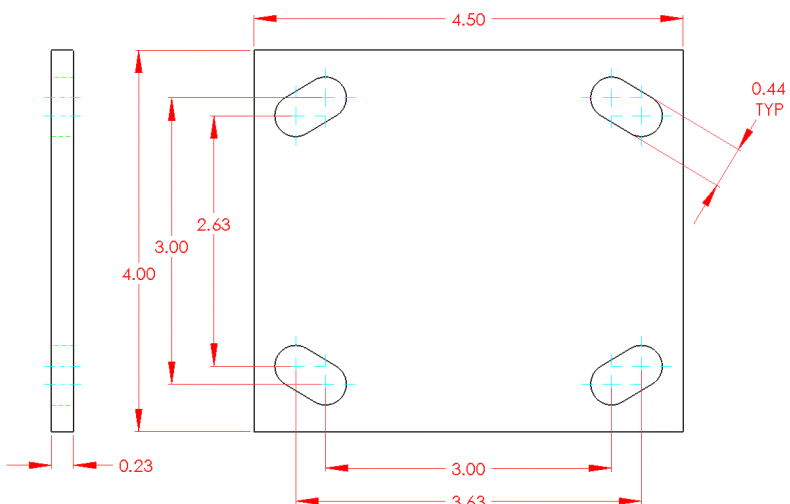
## Standard Features:

- Attractive zinc plated finish
- 1/2" hollow axle with grease zerk and lock nut
- Plastic seal/retainer washer (roller bearing models)
- 1/4" steel top plate for durability
- Grease fittings: wheel bearing
- "Colson 45" multi-temp grease lubricates in extreme hot and cold temperatures

Phenolic resin wheels filled with macerated fabric. Quieter than steel or aluminum, provides superior floor protection. Resistant to hard impacts and most chemicals and steam. Standard color is black.

**Temperature range:** -45°F to +180°F. If metal washers specified: -45°F to +250°F (Roller and Ball bearings only)

**Hardness:** 90 (±5) Shore D Scale



Casters

# 6 X 2 Phenolic Swivel Caster

Phenolic Swivel Caster

6" Wheel

2" Tread Width

900 Pound Capacity

7-1/2 Load Height

Item #

4.06109.339

From the Manufacturer:

## Standard Features:

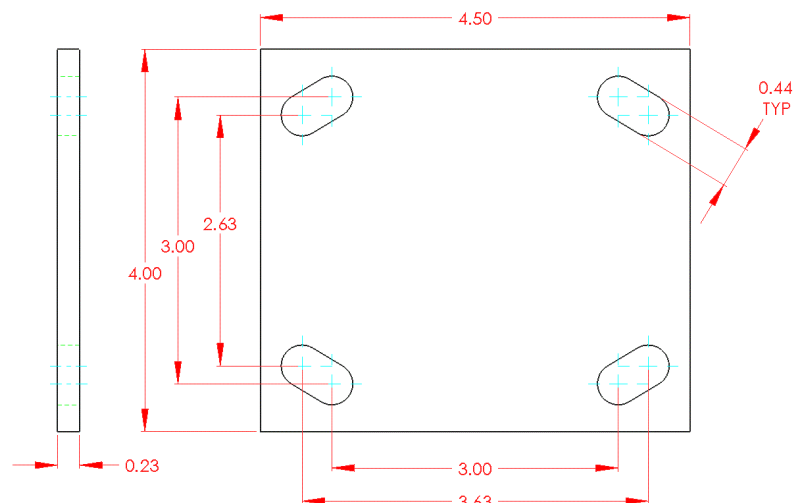
- Attractive zinc plated finish
- Full double ball hardened raceways
- 1/2" hollow axle with grease zerck and lock nut
- Plastic seal/retainer washer (roller bearing models)
- 1/4" steel top plate for durability
- Permanent rivet king pin with 5/8" diameter rivet
- Grease fittings: wheel bearing and swivel raceway
- "Colson 45" multi-temp grease lubricates in extreme hot and cold temperatures

All 4 Series swivel forks are notched to accommodate four position swivel locks.

Phenolic resin wheels filled with macerated fabric. Quieter than steel or aluminum, provides superior floor protection. Resistant to hard impacts and most chemicals and steam. Standard color is black.

**Temperature range:** -45°F to +180°F. If metal washers specified: -45°F to +250°F (Roller and Ball bearings only)

**Hardness:** 90 (±5) Shore D Scale



# 6 X 2 Polyurethane Hi-Tech Rigid Caster

Polyurethane Hi-Tech Rigid Caster

6" Wheel

2" Tread Width

900 Pound Capacity

7-1/2 Load Height

Item #

4.06108.929

From the Manufacturer:

## Standard Features:

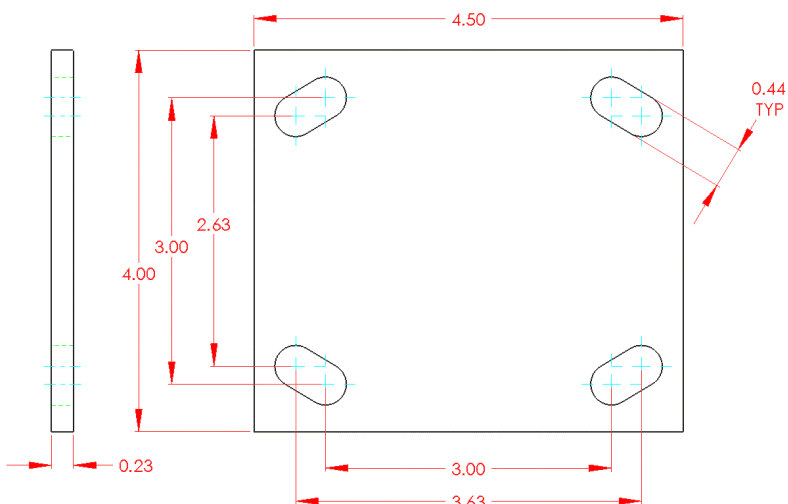
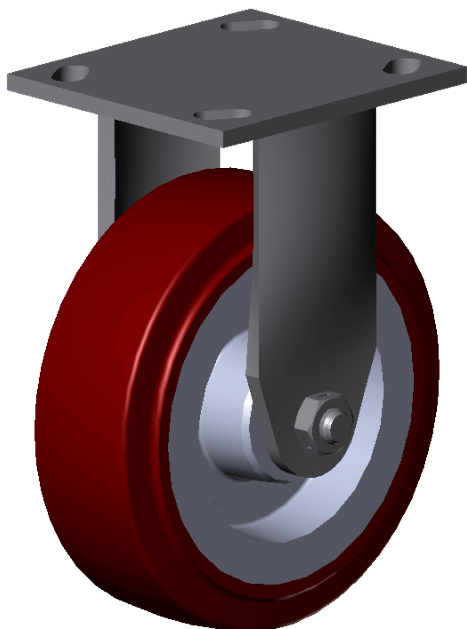
- Attractive zinc plated finish
- 1/2" hollow axle with grease zerk and lock nut
- Plastic seal/retainer washer (roller bearing models)
- 1/4" steel top plate for durability
- Grease fittings: wheel bearing
- "Colson 45" multi-temp grease lubricates in extreme hot and cold temperatures

Industrial strength polyurethane tread bonded to "ribbed" polyolefin core. This design adds strength for loads subjected to shock and hard impacts. Tread is molded in, around and through a ribbed extension of the core to prevent debonding. Standard colors are red tread on grey core.

**Not recommended for conditions of continuous operation such as tow-line, etc.**

**Temperature range:** -45°F to +180°F

**Hardness:** 55(±5) Durometer Shore D scale



Casters

# 6 X 2 Polyurethane Hi-Tech Swivel Caster

Polyurethane Hi-Tech Swivel Caster

6" Wheel

2" Tread Width

900 Pound Capacity

7-1/2 Load Height

Item #

4.06109.929

From the Manufacturer:

## Standard Features:

- Attractive zinc plated finish
- Full double ball hardened raceways
- 1/2" hollow axle with grease zerck and lock nut
- Plastic seal/retainer washer (roller bearing models)
- 1/4" steel top plate for durability
- Permanent rivet king pin with 5/8" diameter rivet
- Grease fittings: wheel bearing and swivel raceway
- "Colson 45" multi-temp grease lubricates in extreme hot and cold temperatures

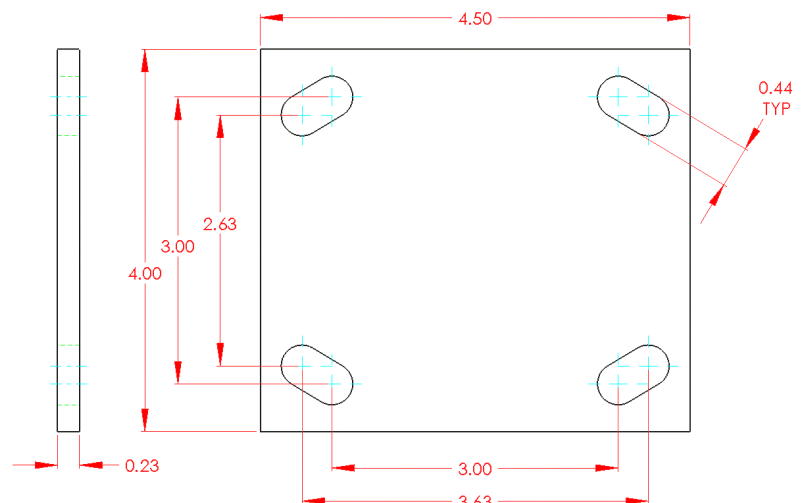
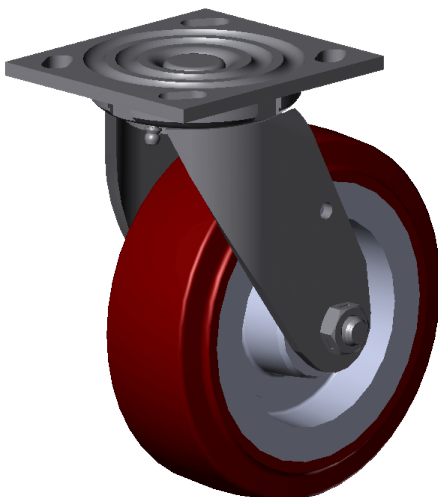
All 4 Series swivel forks are notched to accommodate four position swivel locks.

Industrial strength polyurethane tread bonded to "ribbed" polyolefin core. This design adds strength for loads subjected to shock and hard impacts. Tread is molded in, around and through a ribbed extension of the core to prevent debonding. Standard colors are red tread on grey core.

**Not recommended for conditions of continuous operation such as tow-line, etc.**

**Temperature range:** -45°F to +180°F

**Hardness:** 55(±5) Durometer Shore D scale



# Foot Activated Swivel Lock

Swivel Lock  
Foot Activated  
Up to 1400 pound capacity

Item #

5213.66

From the Manufacturer:

**No more back strain from bending down to activate a swivel lock.**

When the foot pedal is in the "up" position, a stainless steel spring forces a pin into one of the four slots on the swivel fork.

This effectively locks the swivel in one of four positions at 90° intervals. To disengage the lock, simply press down on the foot pedal for free swiveling action. It's that easy! With this innovative product, you can quickly and easily convert swivel casters to rigid casters for straight-line tracking. When you need greater maneuverability, you can quickly convert from the rigid position back to full swivel. Quick. Easy. Less stress and strain.

The Colson Ergonomic Advantage™



# Hand Operated Swivel Lock

Swivel Lock  
Hand Operated

Item #

5213.61

From the Manufacturer:

Swivel locks quickly convert swivel casters to rigid casters for straight-line tracking. A spring-loaded, hand operated plunger is engaged to fit into slots on the swivel raceway. To engage the lock, simply pull out plunger and turn until spring action inserts plunger in notches on raceway.

To disengage the lock, simply pull out the plunger and turn so plunger is not inserted in notches on raceway. The bolt-on swivel locks are field installable only but require that the fork yoke base have notches at 90° intervals. Available on 4 Series casters.



## Top Lock Brake

Top Lock Brake

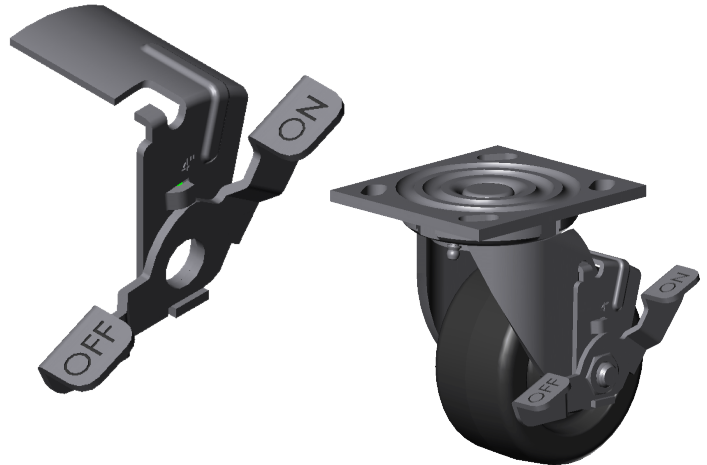
Up to 1400 pound capacity

From the Manufacturer:

Colson 4 Series forks include a special notch for easy installation of Top Lock brakes. The brake is cost effective and provides reliable braking under a variety of operating conditions.

Size "	Wheel "	Item #
4"	For 4" Wheel	05944.14
5"	For 5" Wheel	05944.15
6"	For 6" Wheel	05944.16

\* BRK7 (When Ordered on Caster)



## Total Lock Brake

Total Lock Brake

Up to 1250 pound capacity

From the Manufacturer:

With a press of the foot, lock both wheel and swivel in any position. The low angle pedal design makes foot access easy for convenient operation. And, the contemporary design features thermoplastic construction to resist rust and corrosion. A grip ridge for mechanical lock securely fastens the brake to fork.

Size "	Wheel "	Item #
4"	For 4" Wheel	05906.12
5"	For 5" Wheel	05906.11
6"	For 6" Wheel	05906.09

\* BRK4 (When Ordered on Caster)





# Tread Lock Brake

## Tread Lock Brake

Up to 1500 pound capacity

From the Manufacturer:

Available on 4 Series casters, this adjustable brake can be installed in the field or ordered assembled onto the caster. The toe activated brake features positive engagement via a rubber faced plate.



Size "	Wheel "	Item #
4"	For 4" Wheel	05944.24
5"	For 5" Wheel	05944.25
6"	For 6" Wheel	05944.26

\* BRK1 (When Ordered on Caster)

# Tech Lock Brake

## Tech Lock Brake

Up to 1250 pound capacity

From the Manufacturer:

Constructed of durable, light-weight engineered thermoplastics, this brake is ideally suited for wet or corrosive conditions. The simple toe operation holds heavy loads securely. With an advanced brake pad design, the brake holds a variety of wheel types. Only two moving parts. The Tech Lock brake provides virtually maintenance free operation with two moving parts. Temperature range: -30°F to +250°F. This brake is available on all 4 Series casters, except with a Swivel Lock or 4 Series Enforcer models. U.S. Patent 288285

Size "	Wheel "	Item #
4"	For 4" Wheel	05944.44
5"	For 5" Wheel	05944.45
6"	For 6" Wheel	05944.46

\* BRK2 (When Ordered on Caster)

